



US010658981B2

(12) **United States Patent**
Briffa et al.

(10) **Patent No.:** **US 10,658,981 B2**
(45) **Date of Patent:** ***May 19, 2020**

(54) **LINEARIZATION CIRCUITS AND METHODS FOR MULTILEVEL POWER AMPLIFIER SYSTEMS**

(71) Applicant: **Eta Devices, Inc.**, Cambridge, MA (US)

(72) Inventors: **Mark A. Briffa**, Tyreso (SE); **Joel L. Dawson**, Roslindale, MA (US); **John E. DeRoo**, Atlanta, GA (US); **Krenar Komoni**, Arlington, MA (US); **David J. Perreault**, Cambridge, MA (US); **Oguzhan Uyar**, Cambridge, MA (US)

(73) Assignee: **Eta Devices, Inc.**, Cambridge, MA (US)

(*) Notice: Subject to any disclaimer, the term of this patent is extended or adjusted under 35 U.S.C. 154(b) by 0 days.

This patent is subject to a terminal disclaimer.

(21) Appl. No.: **16/178,072**

(22) Filed: **Nov. 1, 2018**

(65) **Prior Publication Data**
US 2019/0074797 A1 Mar. 7, 2019

Related U.S. Application Data
(63) Continuation of application No. 14/837,616, filed on Aug. 27, 2015, now Pat. No. 10,164,577, which is a (Continued)

(51) **Int. Cl.**
H03G 3/20 (2006.01)
H03F 1/02 (2006.01)
(Continued)

(52) **U.S. Cl.**
CPC **H03F 1/025** (2013.01); **H03F 1/0277** (2013.01); **H03F 1/3241** (2013.01); (Continued)

(58) **Field of Classification Search**
CPC H03G 3/20
(Continued)

(56) **References Cited**
U.S. PATENT DOCUMENTS

4,129,839 A 12/1978 Galani et al.
4,835,493 A 5/1989 Walsh, Jr.
(Continued)

FOREIGN PATENT DOCUMENTS

CN 101453162 6/2009
CN 101521458 9/2009
(Continued)

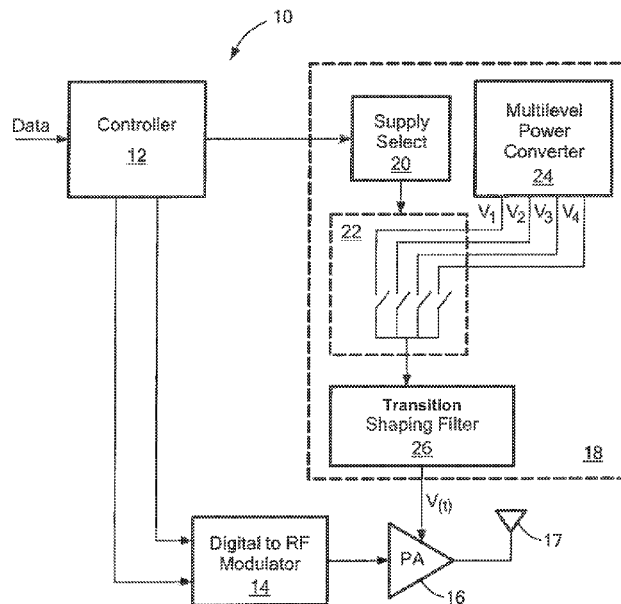
OTHER PUBLICATIONS

Japanese Response (with English Amended Claims) filed Jun. 14, 2018 for Japanese Application No. 2015-544088; 5 pages.
(Continued)

Primary Examiner — Henry Choe
(74) *Attorney, Agent, or Firm* — Daly, Crowley, Mofford & Durkee, LLP

(57) **ABSTRACT**
Circuits and methods for achieving high linearity, high efficiency power amplifiers, including digital predistortion (DPD) and pulse cancellation in switched-state RF power amplifier systems are described.

19 Claims, 10 Drawing Sheets



Related U.S. Application Data

continuation of application No. 14/064,572, filed on Oct. 28, 2013, now Pat. No. 9,160,287, which is a continuation of application No. 13/833,050, filed on Mar. 15, 2013, now Pat. No. 8,829,993, which is a continuation-in-part of application No. 13/663,887, filed on Oct. 30, 2012, now Pat. No. 8,824,978, and a continuation-in-part of application No. 13/663,878, filed on Oct. 30, 2012, now Pat. No. 9,166,536, said application No. 14/837,616 is a continuation of application No. 13/955,952, filed on Jul. 31, 2013, now Pat. No. 9,172,336, which is a continuation of application No. 13/833,050, filed on Mar. 15, 2013, now Pat. No. 8,829,993.

(60) Provisional application No. 61/730,214, filed on Nov. 27, 2012.

(51) **Int. Cl.**

- H03F 1/32** (2006.01)
- H03F 3/195** (2006.01)
- H03F 3/217** (2006.01)
- H03F 3/24** (2006.01)
- H03F 3/60** (2006.01)
- H03F 3/193** (2006.01)
- H03F 3/68** (2006.01)
- H03F 3/19** (2006.01)

(52) **U.S. Cl.**

CPC **H03F 1/3247** (2013.01); **H03F 3/19** (2013.01); **H03F 3/193** (2013.01); **H03F 3/195** (2013.01); **H03F 3/217** (2013.01); **H03F 3/2175** (2013.01); **H03F 3/245** (2013.01); **H03F 3/602** (2013.01); **H03F 3/68** (2013.01); **H03F 2200/207** (2013.01); **H03F 2200/451** (2013.01); **H03F 2200/511** (2013.01); **H03F 2201/3233** (2013.01)

(58) **Field of Classification Search**

USPC 330/136, 297, 296, 285
See application file for complete search history.

(56)

References Cited

U.S. PATENT DOCUMENTS

5,012,200 A 4/1991 Meinzer
 5,251,330 A 10/1993 Chiba et al.
 5,481,447 A 1/1996 Caris et al.
 5,491,623 A 2/1996 Jansen
 5,561,395 A 10/1996 Melton et al.
 5,847,602 A 12/1998 Su
 5,892,395 A 4/1999 Stengel et al.
 6,043,707 A * 3/2000 Budnik H03C 5/00
 330/10
 6,081,161 A 6/2000 Dacus et al.
 6,133,288 A 10/2000 Grese
 6,140,807 A 10/2000 Vannatta et al.
 6,255,906 B1 7/2001 Eidson et al.
 6,327,462 B1 12/2001 Loke et al.
 6,377,117 B2 4/2002 Oskowsky et al.
 6,396,341 B1 5/2002 Pehlke
 6,411,655 B1 6/2002 Holden et al.
 6,449,465 B1 9/2002 Gailus et al.
 6,535,066 B1 3/2003 Petsko
 6,566,944 B1 5/2003 Pehlke et al.
 6,646,501 B1 11/2003 Wessel
 6,657,876 B2 12/2003 Satoh
 6,738,432 B2 5/2004 Pehlke et al.
 6,784,748 B1 8/2004 Canyon et al.
 6,788,151 B2 * 9/2004 Shvarts H03F 1/025
 330/127

6,791,417 B2 9/2004 Pengelly et al.
 6,799,020 B1 9/2004 Heidmann et al.
 6,975,166 B2 12/2005 Grillo et al.
 6,995,995 B2 2/2006 Zeng et al.
 7,068,984 B2 6/2006 Mathe et al.
 7,091,772 B2 8/2006 Friedel et al.
 7,103,114 B1 9/2006 Lapierre
 7,202,655 B2 4/2007 Itoh
 7,236,542 B2 6/2007 Matero
 7,236,753 B2 6/2007 Zipper
 7,279,971 B2 10/2007 Hellberg et al.
 7,317,412 B2 1/2008 Li et al.
 7,330,070 B2 2/2008 Vaisanen
 7,330,071 B1 2/2008 Dening et al.
 7,343,138 B2 3/2008 Bengtson et al.
 7,362,251 B2 4/2008 Jensen et al.
 7,411,449 B2 8/2008 Klingberg et al.
 7,420,415 B2 9/2008 Lee et al.
 7,423,477 B2 9/2008 Sorrells et al.
 7,440,733 B2 10/2008 Maslennikov et al.
 7,469,017 B2 12/2008 Granström et al.
 7,474,149 B2 1/2009 Snelgrove et al.
 7,482,869 B2 1/2009 Wilson
 7,505,747 B2 3/2009 Solum
 7,512,387 B2 3/2009 Glueck
 7,535,133 B2 5/2009 Perreault et al.
 7,555,059 B2 6/2009 Rybicki et al.
 7,583,149 B2 9/2009 Funaki et al.
 7,589,605 B2 9/2009 Perreault et al.
 7,705,681 B2 4/2010 Ilkov
 7,715,811 B2 5/2010 Kenington
 7,724,839 B2 5/2010 Chen et al.
 7,817,962 B2 10/2010 Zolfaghari
 7,881,401 B2 2/2011 Kraut et al.
 7,889,519 B2 2/2011 Perreault et al.
 7,907,429 B2 3/2011 Ramadass et al.
 7,956,572 B2 6/2011 Zane et al.
 7,962,111 B2 6/2011 Solum
 8,009,765 B2 8/2011 Ahmed et al.
 8,026,763 B2 9/2011 Dawson et al.
 8,072,264 B2 12/2011 Gustavsson
 8,155,237 B2 4/2012 Ahmed
 8,164,384 B2 * 4/2012 Dawson H03F 1/0244
 330/124 R
 8,174,322 B2 5/2012 Heijden et al.
 8,212,541 B2 7/2012 Perreault et al.
 8,315,578 B2 11/2012 Zhu et al.
 8,340,606 B2 12/2012 Park et al.
 8,416,018 B2 4/2013 Yamauchi et al.
 8,447,245 B2 5/2013 Staudinger et al.
 8,451,053 B2 5/2013 Perreault et al.
 8,472,896 B2 6/2013 Xu et al.
 8,493,142 B2 7/2013 Tadano
 8,536,940 B2 * 9/2013 Bohn H03F 1/0227
 330/127
 8,542,061 B2 9/2013 Levesque et al.
 8,548,400 B2 10/2013 Traylor et al.
 8,558,616 B2 10/2013 Shizawa et al.
 8,610,499 B2 * 12/2013 Royer H03F 1/3247
 330/149
 8,611,459 B2 * 12/2013 McCallister H04L 25/03343
 330/149
 8,659,353 B2 * 2/2014 Dawson H03F 1/0244
 330/124 R
 8,718,188 B2 5/2014 Balteanu et al.
 8,773,201 B2 * 7/2014 Yamamoto H04B 1/0475
 330/127
 8,952,752 B1 2/2015 Huettner
 8,988,059 B2 3/2015 Rutkowski
 8,995,502 B1 * 3/2015 Lai H04L 25/00
 375/219
 9,048,727 B2 6/2015 Giuliano et al.
 9,083,294 B2 7/2015 Kermalli
 9,141,832 B2 9/2015 Perreault et al.
 9,450,506 B2 9/2016 Perreault et al.
 2003/0001668 A1 1/2003 Mruz et al.
 2003/0146791 A1 8/2003 Shvarts et al.
 2004/0100323 A1 5/2004 Khanifar et al.
 2004/0251964 A1 12/2004 Weldon

(56)

References Cited

U.S. PATENT DOCUMENTS

2005/0030104 A1 2/2005 Chen et al.
 2005/0062529 A1 3/2005 Gan et al.
 2005/0110590 A1 5/2005 Korol
 2005/0152471 A1 7/2005 Tanaka et al.
 2005/0191975 A1 9/2005 Talwalkar et al.
 2005/0191976 A1 9/2005 Shakeshaft et al.
 2007/0066224 A1 3/2007 d'Hont et al.
 2007/0066250 A1 3/2007 Takahashi et al.
 2007/0069818 A1 3/2007 Bhatti et al.
 2007/0080747 A1 4/2007 Klingberg et al.
 2007/0123184 A1 5/2007 Nesimoglu et al.
 2007/0146068 A1 6/2007 Ishikawa et al.
 2007/0146090 A1 6/2007 Carey et al.
 2007/0159257 A1 7/2007 Lee et al.
 2007/0247222 A1 10/2007 Sorrells et al.
 2007/0247253 A1 10/2007 Carey et al.
 2007/0281635 A1 12/2007 McCallister et al.
 2007/0290747 A1 12/2007 Traylor et al.
 2007/0291718 A1 12/2007 Chan et al.
 2008/0001660 A1 1/2008 Rasmussen
 2008/0003960 A1 1/2008 Zolfaghari
 2008/0003962 A1 1/2008 Ngai
 2008/0007333 A1 1/2008 Lee et al.
 2008/0012637 A1 1/2008 Aridas et al.
 2008/0019459 A1 1/2008 Chen et al.
 2008/0085684 A1 4/2008 Phillips et al.
 2008/0139140 A1 6/2008 Matero et al.
 2008/0146171 A1 6/2008 Hellberg et al.
 2008/0180171 A1 7/2008 Brobston
 2008/0297246 A1 12/2008 Taylor
 2009/0310705 A1 12/2009 Fujimoto
 2009/0322384 A1 12/2009 Oraw et al.
 2010/0073084 A1 3/2010 Hur et al.
 2010/0117727 A1 5/2010 Dawson et al.
 2010/0120384 A1 5/2010 Pennec
 2010/0201441 A1 8/2010 Gustavsson
 2011/0135035 A1 6/2011 Bose et al.
 2011/0148705 A1 6/2011 Kenington
 2011/0156815 A1 6/2011 Kim et al.
 2011/0309679 A1 12/2011 Fisher et al.
 2012/0021291 A1 1/2012 Ji et al.
 2012/0176195 A1 7/2012 Dawson et al.
 2012/0188018 A1 7/2012 Yahav et al.
 2012/0212291 A1 8/2012 Wilson
 2012/0252382 A1 10/2012 Bashir et al.
 2012/0256686 A1 10/2012 Royer
 2012/0313602 A1 12/2012 Perreault et al.
 2012/0326684 A1 12/2012 Perreault et al.
 2013/0241625 A1 9/2013 Perreault et al.
 2013/0251066 A1 9/2013 Kim et al.
 2013/0307618 A1 11/2013 Anvari
 2013/0343106 A1 12/2013 Perreault et al.
 2013/0343107 A1 12/2013 Perreault
 2014/0118063 A1 5/2014 Briffa et al.
 2014/0118065 A1 5/2014 Briffa et al.
 2014/0118072 A1 5/2014 Briffa et al.
 2014/0120854 A1 5/2014 Briffa et al.
 2014/0125412 A1 5/2014 Dawson et al.
 2014/0132354 A1 5/2014 Briffa et al.
 2014/0167513 A1 6/2014 Chang et al.
 2014/0225581 A1 8/2014 Guiliano et al.
 2014/0226378 A1 8/2014 Perreault
 2015/0372646 A1 12/2015 Briffa et al.

FOREIGN PATENT DOCUMENTS

EP 1 381 154 A1 1/2004
 EP 1 750 366 A2 2/2007
 EP 1 750 366 A3 2/2007
 EP 1 609 239 B1 7/2010
 JP 403276912 A 12/1991
 JP H03-276912 A 12/1991
 JP 2003-309640 A 10/2003
 JP 2005-198109 A 7/2005
 JP 2006-174418 A 6/2006

JP 2006-254345 A 9/2006
 JP 2007174374 A 7/2007
 JP 2007-300400 A 11/2007
 JP 2008-028509 A 2/2008
 JP 2009118454 A 5/2009
 JP 2012-114529 A 6/2012
 WO WO 2004/077662 A1 9/2004
 WO WO 2005/106613 A1 11/2005
 WO WO 2006/119362 A2 11/2006
 WO WO 2007/082090 A2 7/2007
 WO WO 2007/094921 A1 8/2007
 WO WO 2007/136919 A2 11/2007
 WO WO 2007/136919 A3 11/2007
 WO WO 2008/093404 A1 8/2008
 WO WO 2008/111471 9/2008
 WO WO 2009/153218 A1 12/2009
 WO WO 2010/056646 A1 5/2010
 WO WO 2011/097387 A1 8/2011
 WO WO 2013/086445 6/2013
 WO WO 2013/109719 A1 7/2013
 WO WO 2013/109743 A2 7/2013
 WO WO 2013/109797 A1 7/2013
 WO WO 2013/134573 A1 9/2013
 WO WO 2013/191757 12/2013
 WO WO 2013/191757 A1 12/2013
 WO WO 2014/004241 A2 1/2014
 WO WO 2014/028441 A2 2/2014
 WO WO 2014/070474 A1 5/2014
 WO WO 2014/070475 A1 5/2014
 WO WO 2014/070998 A1 5/2014
 WO WO 2014/085097 A1 6/2014

OTHER PUBLICATIONS

U.S. Appl. No. 14/823,220, filed Aug. 11, 2015, Barton, et al.
 U.S. Appl. No. 14/791,685, filed Jul. 6, 2015, Perreault, et al.
 U.S. Appl. No. 14/758,033, filed Jun. 26, 2015, Perreault, et al.
 U.S. Appl. No. 14/666,965, filed Mar. 24, 2015, Briffa, et al.
 U.S. Appl. No. 14/619,737, filed Feb. 11, 2015, Perreault, et al.
 U.S. Appl. No. 14/338,671, filed Jul. 23, 2014, Briffa, et al.
 U.S. Appl. No. 15/354,170, filed Nov. 17, 2016, Briffa, et al.
 U.S. Appl. No. 15/290,402, filed Oct. 11, 2016, Perreault, et al.
 U.S. Appl. No. 15/287,068, filed Oct. 6, 2016, Briffa, et al.
 U.S. Appl. No. 15/149,491, filed May 9, 2016, Perreault, et al.
 U.S. Appl. No. 14/035,445, filed Sep. 24, 2013, Perreault.
 Amendment to Office Action dated Apr. 7, 2011 (U.S. Appl. No. 12/680,048, filed Mar. 25, 2010).
 Application of Mark A. Briffa, et al. U.S. Appl. No. 13/663,887, filed Oct. 30, 2012; 72 pages.
 Beltran, et al.; "HF Outphasing Transmitter Using Class-E Power Amplifiers;" Microwave Symposium Digest, IEEE; Jun. 2009; pp. 757-760.
 Bifrane, et al.; "On the Linearity and Efficiency of Outphasing Microwave Amplifiers;" IEEE Transactions on Microwave Theory and Techniques; vol. 52; No. 7; Jul. 2004; pp. 1702-1708.
 Briffa, et al.; "Linearization Circuits and Methods for Multilevel Power Amplifier Systems;" Patent Application filed on Oct. 28, 2013; U.S. Appl. No. 14/064,572.
 Briffa, et al.; "Transmitter Architecture and Related Methods;" Patent filed on Oct. 30, 2012; U.S. Appl. No. 13/663,878.
 Briffa, et. al; "Linearization Circuits and Methods for Multilevel Power Amplifier Systems;" Patent Application filed on Mar. 15, 2013; U.S. Appl. No. 13/833,050.
 Chen, et al.; "A High Efficiency Outphasing Transmitter Structure for Wireless Communications;" Digital Signal Processing Workshop, IEEE; Jan. 2009, pp. 348-352.
 Chireix; "High Power Outphasing Modulation;" Proceedings of the Institute of Radio Engineers; vol. 23; No. 11; Nov. 1935; pp. 1370-1392.
 Communication pursuant to Article 94(3) EPC dated Dec. 6, 2017 from European Application No. 13 851 838.6; 4 Pages.
 Communication pursuant to Article 94(3) EPC dated Jan. 5, 2017 for European Patent Application No. 13 851 838.6; 4 Pages.
 Cox; "Linear Amplification with Nonlinear Components;" IEEE Transactions on Communications; Dec. 1974; pp. 1942-1945.

(56)

References Cited

OTHER PUBLICATIONS

- Cripps; "RF Power Amplifier for Wireless Communications, 2nd Ed.;" Chapter 14, Artech House, Boston, MA; Jan. 2006.
- D. Diaz, et al., "Comparison of Two Different Cell Topologies for a Multilevel Power Supply to Achieve High Efficiency Envelope Amplifier", IEEE, 2009, pp. 25-30.
- El-Hamamsy; "Design of High-Efficiency RF Class-D Power Amplifier;" IEEE Transactions on Power Electronics; vol. 9; No. 3; May 1994; pp. 297-308.
- English translation of Amended Claims filed with JPO Oct. 4, 2016 for JP Pat. Appl. No. 2015-539669; 9 pages.
- Eun, et al.; "A High Linearity Chireix Outphasing Power Amplifier Using Composite Right/Left-Handed Transmission Lines;" Proceedings of the 37th European Microwave Conference; Oct. 2007; pp. 1622-1625.
- European Extended Search Report dated Jul. 4, 2016; for European Appl. No. 13858970.0; 7 pages.
- European Extended Search Report dated Mar. 10, 2016 corresponding to European Application No. 13851200.9; 8 Pages.
- European Extended Search Report dated May 17, 2016; for European Pat. App. No. 13851838.6, 8 pages.
- Everitt, et al.; "Communication Engineering;" 3rd Edition, Chapter 11, pp. 403-450, New York: McGraw-Hill, 1956.
- Examination Report dated Sep. 4, 2018 for European Application No. 13851838.6; 5 pages.
- Frederick H. Raab, et al., "RF and Microwave Power Amplifier and Transmitter Technologies—Part 3", Sep. 2003, High Frequency Electronics, Summit Technical Media, LLC., pp. 34-48.
- Gerhard, et al.; "Improved Design of Outphasing Power Amplifier Combiners;" 2009 German Microwave Conference; Mar. 2009; pp. 1-4.
- Godoy et al.; "A 2.5-GHz asymmetric multilevel outphasing power amplifier in 65-nm CMOS"; Massachusetts Institute of Technology, IEEE 2011; pp. 57-60 (4 pages).
- Godoy, et al.; "A 2.4-GHz, 27-dBm Asymmetric Multilevel Outphasing Power Amplifier in 65-nm CMOS;" IEEE Journal of Solid-State Circuits; vol. 47; No. 10; Oct. 2012; pp. 2372-2384.
- Godoy, et al.; "Outphasing Energy Recovery Amplifier With Resistance Compression for Improved Efficiency;" IEEE Transactions on Microwave Theory and Techniques; vol. 57; No. 12; Dec. 2009; pp. 2895-2906.
- Hakala, et al., "A 2.14-GHz Chireix Outphasing Transmitter;" IEEE Transactions on Microwave Theory and Techniques; vol. 53; No. 6; Jun. 2005; pp. 2129-2138.
- Hakala, et al.; Chireix Power Combining with Saturated Class-B Power Amplifiers; 12th GAAS Symposium; Oct. 2004, pp. 379-382.
- Hamill; "Impedance Plan Analysis of Class DE Amplifier;" Electronics Letters; vol. 30; No. 23; Nov. 10, 1994; pp. 1905-1906.
- Hamill; "Time Reversal Duality Between Linear Networks;" IEEE Transactions on Circuits and Systems-I: Fundamental Theory and Applications; vol. 43; No. 1; Jan. 1996; pp. 63-65.
- Hamill; "Time Reversal Duality in Dc-Dc Converters;" Power Electronics Specialists Conference, IEEE; vol. 1; Jun. 1997; 7 pages.
- Han, et al.; "Analysis and Design of High Efficiency Matching Networks;" IEEE Transactions on Power Electronics; vol. 21; No. 5, Sep. 2006; pp. 1484-1491.
- Han, et al.; "Resistance Compression Networks for Radio-Frequency Power Conversion;" IEEE Transactions on Power Electronics; vol. 22; No. 1; Jan. 2007; pp. 41-53.
- Honjo; "A Simple Circuit Synthesis Method for Microwave Class-F Ultra-High-Efficiency Amplifiers with Reactance-Compensation Circuits;" Solid-State Electronics 44; Feb. 2000; pp. 1477-1482.
- Hur, et al.; "A Multi-Level and Multi-Band Class-D CMOS Power Amplifier for the LINC System in the Cognitive Radio Application;" IEEE Microwave and Wireless Components Letters; vol. 20; Issue 6; Jun. 2010; pp. 1-3.
- Hur, et al.; "Highly Efficient and Linear Level Shifting Digital LINC Transmitter with a Phase Offset Cancellation;" Radio & Wireless Symposium; Jan. 2009; pp. 211-214.
- Hur, et al.; "Highly Efficient Uneven Multi-Level LINC Transmitter;" Electronics Letters; Jul. 30, 2009; vol. 45; No. 16; 2 pages. U.S. Appl. No. 12/615,696, filed Nov. 10, 2009.
- U.S. Appl. No. 13/106,195, filed May 12, 2011.
- U.S. Appl. No. 13/423,909, filed Mar. 19, 2012.
- U.S. Appl. No. 13/020,568, filed Feb. 3, 2011.
- International Preliminary Report on Patentability of the ISA for PCT/US2009/063821 dated May 26, 2011.
- International Preliminary Report on Patentability of the ISA for PCT/US2011/023613 dated Aug. 16, 2012.
- Invitation to Pay Additional Fees in PCT/US2009/063821 dated Feb. 9, 2010.
- Japanese Office Action dated Dec. 14, 2017 from Japanese Pat. App. No. 2015-539670 with English Translations; 11 Pages.
- Japanese Voluntary Amendment and Request for Examination (with English amended claims) filed Nov. 2, 2016; for Japanese Pat. App. 2015-544088; 17 pages.
- Japanese Voluntary Amendment and Request for Examination (with English amended claims) filed Oct. 4, 2016; for Japanese Pat. App. 2015-539670; 19 pages.
- Japanese Voluntary Amendment and Request for Examination (with English amended claims) filed Oct. 4, 2016; for Japanese Pat. App. 2015-539669; 19 pages.
- Jinsung Choi, et al., "A $\Delta \Sigma$ —Digitized Polar RF Transmitter", IEEE Transactions on Microwave Theory and Techniques, vol. 55, No. 12, Dec. 2007, pp. 2679-2690.
- Kai-Yuan Jheng, et al., "Multilevel LINC System Design for Power Efficiency Enhancement", IEEE, 2007, pp. 31-34.
- Kee, et al.; "The Class-E/F Family of ZVS Switching Amplifiers;" IEEE Transactions on Microwave Theory and Techniques; vol. 51; No. 6; Jun. 2003; pp. 1677-1690.
- Kevin Tom, et al., "Load-Pull Analysis of Outphasing Class-E Power Amplifier", The 2nd International Conference on Wireless Broadband and Ultra Wideband Communications (AusWireless 2007), IEEE, 2007, pp. 1-4.
- Kruass, et al.; *Solid State Radio Engineering*; Chapter 14, New York: Wiley, 1980.
- Langridge, et al.; "A Power Re-Use Technique for Improved Efficiency of Outphasing Microwave Power Amplifiers;" IEEE Transactions on Microwave Theory and Techniques; vol. 47; No. 8; Aug. 1999; pp. 1467-1470.
- Lee; "Planar Microwave Engineering;" Chapter 20, pp. 630-687, New York: Cambridge University Press, 2004.
- Lepine, et al.; "L-Band LDMOS Power Amplifiers Based on an Inverse Class-F Architecture;" IEEE Transactions on Microwave Theory and Techniques; vol. 53; No. 6; Jun. 2005; pp. 2007-2012.
- M. Rodriguez, et al., "Multilevel Converter for Envelope Tracking in RF Power Amplifiers", IEEE, 2009, pp. 503-510.
- Ni, et al.; "A New Impedance Match Method in Serial Chireix Combiner;" 2008 Asia-Pacific Microwave Conference; Dec. 2008; pp. 1-4.
- Non-Final Office Action dated Aug. 26, 2016; for U.S. Appl. No. 14/968,045; 30 pages.
- Non-Final Office Action dated May 18, 2016; for U.S. Appl. No. 14/934,760, 31 pages.
- Notice of Allowance dated Aug. 13, 2015; for U.S. Appl. No. 13/663,878; 13 pages.
- Notice of Allowance dated Aug. 24, 2016; for U.S. Appl. No. 14/920,031; 29 pages.
- Notice of Allowance dated Aug. 25, 2015; for U.S. Appl. No. 14/666,965 16 pages.
- Notice of Allowance dated Aug. 3, 2015, for U.S. Appl. No. 14/064,572 ; 13 pages.
- Notice of Allowance dated Dec. 1, 2016 for European Patent Application No. 13/851,200.9; 60 pages.
- Notice of Allowance dated Jul. 14, 2014 for U.S. Appl. No. 13/833,050, filed Mar. 15, 2013.
- Notice of Allowance dated Jul. 29, 2015, for U.S. Appl. No. 13/955,952; 11 pages.
- Notice of Allowance dated Jul. 7, 2016; for U.S. Appl. No. 14/934,760; 9 pages.
- Notice of Allowance dated Jun. 9, 2017 for U.S. Appl. No. 14/968,045; 11 Pages.

(56)

References Cited

OTHER PUBLICATIONS

Notice of Allowance dated Jun. 9, 2017 for U.S. Appl. No. 15/354,170; 11 Pages.

Notice of Allowance dated Mar. 19, 2018 for U.S. Appl. No. 15/287,068; 12 pages.

Notice of Allowance dated Mar. 2, 2015 for U.S. Appl. No. 14/338,671, filed Jul. 23, 2014; 11 pages.

Notice of Allowance for U.S. Appl. No. 13/663,887, filed Oct. 30, 2012.

Notice of Reasons for Rejection dated Jan. 12, 2018 for JP Pat. Appl. No. 2015-544088; 11 pages.

Notice of Reasons for Rejection dated Nov. 24, 2017 from Japanese Patent Application No. 2015-539669 with English Translations; 13 Pages.

Office Action dated Apr. 24, 2015; for U.S. Appl. No. 14/064,572 10 pages.

Office Action dated Feb. 22, 2017 from U.S. Appl. No. 15/287,068; 43 Pages.

Office Action dated Feb. 23, 2015; for U.S. Appl. No. 14/064,572, filed Oct. 28, 2013; 29 pages.

Office Action dated Feb. 24, 2017 from U.S. Appl. No. 14/968,045; 15 Pages.

Office Action dated Feb. 27, 2017 from U.S. Appl. No. 15/354,170; 28 Pages.

Office Action dated Jan. 12, 2018 from Japanese Pat. Appl. No. 2015-544088 with English Translations; 18 Pages.

Office Action dated Jan. 26, 2015 for U.S. Appl. No. 13/955,952, filed Jul. 31, 2013.

Office Action dated Jul. 8, 2015 for U.S. Appl. No. 13/955,952; 13 pages.

Office Action dated Jun. 2, 2015; for U.S. Appl. No. 13/663,878; 18 pages.

Office Action dated May 21, 2015; for U.S. Appl. No. 14/666,965; 15 pages.

Office Action dated May 23, 2014 for U.S. Appl. No. 13/663,878, filed Oct. 30, 2012.

Office Action dated May 7, 2015 for U.S. Appl. No. 13/663,878, filed Oct. 30, 2012.

Office Action dated Nov. 3, 2014 for U.S. Appl. No. 14/338,671, filed Jul. 23, 2014.

Office Action dated Oct. 29, 2014 for U.S. Appl. No. 13/663,878, filed Oct. 30, 2012.

Office Action dated Sep. 26, 2017 from U.S. Appl. No. 15/287,068; 16 Pages.

PCT International Preliminary Report on Patentability and Written Opinion of the ISA dated Jun. 2, 2015; for PCT Pat. App. No. PCT/US2013/070027; 12 pages.

PCT International Preliminary Report on Patentability for Appl. No. PCT/US2013/06552 dated May 14, 2015.

PCT International Preliminary Report on Patentability for Appl. No. PCT/US2013/06553 dated May 14, 2015.

PCT Search Report of the ISA dated Apr. 13, 2010.

PCT Search Report of the ISA for PCT/US2011/023613 dated May 30, 2011.

PCT Search Report of the ISA for PCT/US2013/065552 dated Mar. 20, 2014.

PCT Search Report of the ISA for PCT/US2013/065553 dated Mar. 20, 2014.

PCT Search Report of the ISA for PCT/US2013/70027 dated Apr. 22, 2014.

PCT Written Opinion of the ISA dated Apr. 13, 2010.

PCT Written Opinion of the ISA for PCT/US2013/70027 dated Apr. 22, 2014.

Perreault; A New Power Combining and Outphasing Modulation System for High-Efficiency Power Amplification; Circuits and Systems (MWSCAS), 53rd IEEE, International Midwest Symposium; Aug. 2010; pp. 1-14.

Petri Eloranta, et al., "A Multimode Transmitter in 0.13 μ m CMOS Using Direct-Digital RF Modulator", IEEE Journal of Solid-State Circuits, vol. 42, No. 12, Dec. 2007, pp. 2774-2784.

Phinney, et al.; "Radio-Frequency Inverters with Transmission-Line Input Networks," IEEE Transactions on Power Electronics; vol. 22; No. 4; Jul. 2007; pp. 1154-1161.

Qureshi, et al.; "A 90-W Peak Power GaN Outphasing Amplifier with Optimum Input Signal Conditioning," IEEE Transactions on Microwave Theory and Techniques; vol. 57; No. 8; Aug. 2009; pp. 1925-1935.

Raab, et al.; "RF and Microwave Power Amplifier and Transmitter Technologies—Part 3," High Frequency Electronics; Sep. 2003; pp. 34-48.

Raab; "Average Efficiency of Class-G Power Amplifiers," IEEE Transactions on Consumer Electronics; vol. CE-32; No. 2; May 1986; pp. 145-150.

Raab; "Class-F Power Amplifiers with Maximally Flat Waveforms," IEEE Transactions on Microwave Theory and Techniques; vol. 45; No. 11; Nov. 1997; pp. 2007-2012.

Raab; "Efficiency of Outphasing RF Power-Amplifier Systems," IEEE Transactions on Communications; vol. Com-33; No. 10; Oct. 1985; pp. 1094-1099.

Response filed Dec. 30, 2014 of Office Action dated Oct. 29, 2014 for U.S. Appl. No. 13/663,878 20 pages.

Response filed on Aug. 30, 2016 to Non-Final Office Action dated Aug. 26, 2016; for U.S. Appl. No. 14/968,045; 10 pages.

Response filed on Jul. 17, 2015 to a Non-Final Office Action dated Apr. 24, 2015, for U.S. Appl. No. 14/064,572; 9 pages.

Response filed on Jul. 21, 2015 to a Final Office Action dated Jun. 2, 2015, for U.S. Appl. No. 13/663,878; 13 pages.

Response filed on Jul. 24, 2015 to a Non-Final Office Action dated May 21, 2015, for U.S. Appl. No. 14/666,965; 12 pages.

Response filed on Jun. 3, 2016 to Non-Final Office Action dated May 18, 2016; for U.S. Appl. No. 14/934,760; 10 pages.

Response filed on Mar. 10, 2015; to an Office Action dated Feb. 23, 2015; U.S. Appl. No. 14/064,572; 3 pages.

Response filed on May 26, 2015; to an Office Action dated Jan. 26, 2015; U.S. Appl. No. 13/955,952; 11 pages.

Response filed on Sep. 30, 2016 to the Official Communication of Mar. 31, 2016; for European Pat. App. No. 13851200.9; 4 pages.

Response to Communication dated Dec. 5, 2016 with amended claims for European Patent Application No. 13/851,838.6; 7 Pages.

Response to Office Action dated Feb. 22, 2017 from U.S. Appl. No. 15/287,068, filed May 16, 2017; 8 Pages.

Response to Office Action dated Feb. 24, 2017 from U.S. Appl. No. 14/968,045, filed May 12, 2017; 9 Pages.

Response to Office Action dated Feb. 27, 2017 from U.S. Appl. No. 15/354,170, filed May 22, 2017; 7 Pages.

Response to Office Action dated Jan. 5, 2017 as filed on Jul. 6, 2017 from European Patent Application No. 13851838.6; 13 Pages.

Response to Office Action dated May 23, 2014 for U.S. Appl. No. 13/663,878, filed Oct. 30, 2012.

Response to Office Action dated Nov. 3, 2014 as filed on Jan. 22, 2015 for U.S. Appl. No. 14/338,671, filed Jul. 23, 2014.

Response to Office Action dated Sep. 26, 2017 from U.S. Appl. No. 15/287,068, filed Dec. 22, 2017; 12 Pages.

Response to Rule 161 communication dated Jun. 28, 2011; Jan. 9, 2012.

Response to the Jul. 21, 2016 communication pursuant to Rules 72(2) and 70a(e) EPC from European Application No. 13858970.0 as filed on Jan. 31, 2017; 5 Pages.

Rivas, et al.; "A High-Frequency Resonant Inverter Topology with Low-Voltage Stress," IEEE Transactions on Power Electronics; vol. 23; No. 4; Jul. 2008; pp. 1759-1771.

Shirvani, et al.; "A CMOS RF Power Amplifier With Parallel Amplification for Efficient Power Control," IEEE Journal of Solid-State Circuits; vol. 37; No. 6; Jun. 2002; pp. 684-693.

Sokal, et al.; "Class E-A New Class of High-Efficiency Tuned Single-Ended Switching Power Amplifiers," IEEE Journal of Solid-State Circuits; vol. SC-10; No. 3; Jun. 1975; pp. 168-176.

Sokal; "Class-E RF Power Amplifiers," QEX; Jan./Feb. 2001; pp. 9-20.

Sungwon Chung, et al., "Asymmetric Multilevel Outphasing Architecture for Multi-Standard Transmitters", 2009 IEEE Radio Frequency Integrated Circuits Symposium, pp. 237-240.

(56)

References Cited

OTHER PUBLICATIONS

- Supplemental Response filed on Aug. 10, 2015 to an Office Action dated May 21, 2015, for U.S. Appl. No. 14/666,965, 9 pages.
- Surya Musunuri, et al., "Improvement of Light-Load Efficiency Using Width-Switching Scheme for CMOS Transistors", IEEE Power Electronics Letters, vol. 3, No. 3, Sep. 2005, pp. 105-110.
- Van der Heijden, et al.; "A 19W High-Efficiency Wide-Band CMOS-GaN Class-E Chireix RF Outphasing Power Amplifier," Microwave Symposium Digest (MMT), 2011 IEEE MTT-S International; Jun. 5-10, 2011; 4 pages.
- Vasic, et al.; "Multilevel Power Supply for High Efficiency RF Amplifiers;" 2009 IEEE Applied Power Electronics Conference; pp. 1233-1238; Feb. 2009.
- Walling, et al.; "A Class-G Supply Modulator and Class-E PA in 130 nm CMOS;" IEEE Journal of Solid-State Circuits; vol. 44; No. 9; Sep. 2009; pp. 2339-2347.
- Written Opinion of the ISA for PCT/US2011/023613 dated May 30, 2011.
- Written Opinion of the ISA for PCT/US2013/065552 dated Mar. 20, 2014.
- Written Opinion of the ISA for PCT/US2013/065553 dated Mar. 20, 2014.
- Xu, et al.; "A 28.1dBm class-D outphasing power amplifier in 45nm LP digital CMOS;" Symposium on VLSI Circuits Digest of Technical Papers; Jun. 16, 2009; pp. 206-207.
- Yan, et al.; "A High Efficiency 780 MHz GaN Envelope Tracking Power Amplifier;" 2012 Compound Semiconductor Integrated Circuits Symposium; Oct. 2012; pp. 1-4.
- Yao, et al.; "Power Amplifier Selection for LINC Applications;" IEEE Transactions on Circuits and Systems-II: Express Briefs; vol. 53; No. 8; Aug. 2006; pp. 763-767.
- Yousefzadeh, et al.; "Three-Level Buck Converter for Envelope Tracking Applications;" IEEE Transactions on Power Electronics; vol. 21; No. 2; Mar. 2006; pp. 549-552.
- Yuan-Jyue Chen, et al., "Multilevel LINC System Design for Wireless Transmitters", IEEE, 2007, pp. 1-4.
- Zhang, et al.; "Analysis of Power Recycling Techniques for RF and Microwave Outphasing Power Amplifiers;" IEEE Transactions on Circuits and Systems-II: Analog and Digital Signal Processing; vol. 49; No. 5; May 2002; pp. 312-320.
- Zhou, et al.; "A Distributed Active Transformer Coupled Outphasing Power Combiner;" IEEE Microwave Conference; Dec. 2009; pp. 2565-2568.
- Zhou, et al.; "A Distributed Active Transformer Coupled Outphasing Power Combiner;" Microwave Conference, IEEE; Dec. 7, 2009; pp. 2565-2568.
- Zhukov, et al.; "Push-pull switching oscillator without commutating losses;" Poluprovodnikovye Pribory v. Tekhnike Elektrosvyazi, No. 15, Jan. 1975, 8 pages.
- Japanese Office Action (with English Translation) dated Sep. 25, 2018 for Japanese Application No. 2015-539670; 9 pages.
- European Response filed Nov. 5, 2018 for European Application No. 13851838.6; 12 pages.
- Notice of Allowance dated Oct. 12, 2018 for U.S. Appl. No. 14/837,616; 8 pages.
- Response to U.S. Final Office Action dated Jun. 26, 2018 for U.S. Appl. No. 14/837,616; Response filed Sep. 7, 2018; 14 pages.
- U.S. Final Office Action dated Jun. 26, 2018 for U.S. Appl. No. 14/837,616; 4 pages.
- U.S. Non-Final Office Action dated Feb. 9, 2018 for U.S. Appl. No. 14/837,616; 6 pages.
- U.S. Final Office Action dated Oct. 10, 2017 for U.S. Appl. No. 14/837,616; 6 pages.
- Response to U.S. Non-Final Office Action dated Jun. 16, 2017 for U.S. Appl. No. 14/837,616; Response filed Sep. 14, 2017; 10 pages.
- U.S. Non-Final Office Action dated Jun. 16, 2017 for U.S. Appl. No. 14/837,616; 7 pages.
- Response to U.S. Non-Final Office Action dated Mar. 2, 2017 for U.S. Appl. No. 14/837,616; Response filed Jun. 1, 2017; 9 pages.
- U.S. Non-Final Office Action dated Mar. 2, 2017 for U.S. Appl. No. 14/837,616; 6 pages.
- U.S. Non-Final Office Action dated Sep. 15, 2016 for U.S. Appl. No. 14/837,616; Response filed Dec. 6, 2016; 3 pages.
- U.S. Non-Final Office Action dated Sep. 15, 2016 for U.S. Appl. No. 14/837,616; 6 pages.
- Preliminary Amendment filed Aug. 31, 2015 for U.S. Appl. No. 14/837,616; 7 pages.
- Terminal Disclaimer filed Dec. 6, 2016 for U.S. Appl. No. 14/837,616; 2 pages.
- Response filed on Feb. 28, 2019 for Japanese Patent Application No. 2015-544088 with English Translation of amended claims; 7 Pages.
- Japanese Office Action dated Nov. 26, 2018 for Japanese Application No. 2015-544088; 12 pages.
- Communication Pursuant to Article 94(3) EPC dated Jan. 14, 2019 for European Appl. No. 13851838.6; 4 pages.
- Communication pursuant to Article 94(3) EPC dated Oct. 18, 2019 for European Application No. 13858970.0; 5 pages.
- Office Action with English translation dated Oct. 21, 2019 for Japanese Application No. 2015-539670; 5 pages.
- Response to Communication Pursuant to Article 94(3) dated Jan. 14, 2019 for European Application No. 13 851 838.6 as filed on May 14, 2019; 76 pages.
- Communication Pursuant to Article 94(3) dated Jun. 25, 2019 for European Application No. 13 851 838.6; 4 pages.
- Response to Office Action dated Jun. 25, 2019 for Application No. 13851838.6 filed on Oct. 14, 2019; 11 pages.
- Examination Report dated Nov. 22, 2019 for European Application No. 13851838.6; 4 Pages.
- European Communication pursuant to Article 94(3) EPC dated Jan. 17, 2020 for European Application No. 15748815.6-1201; 4 pages.
- Notice of Reason for Refusal dated Mar. 16, 2020 for Japanese Application 2019-35865; 8 pages.

* cited by examiner

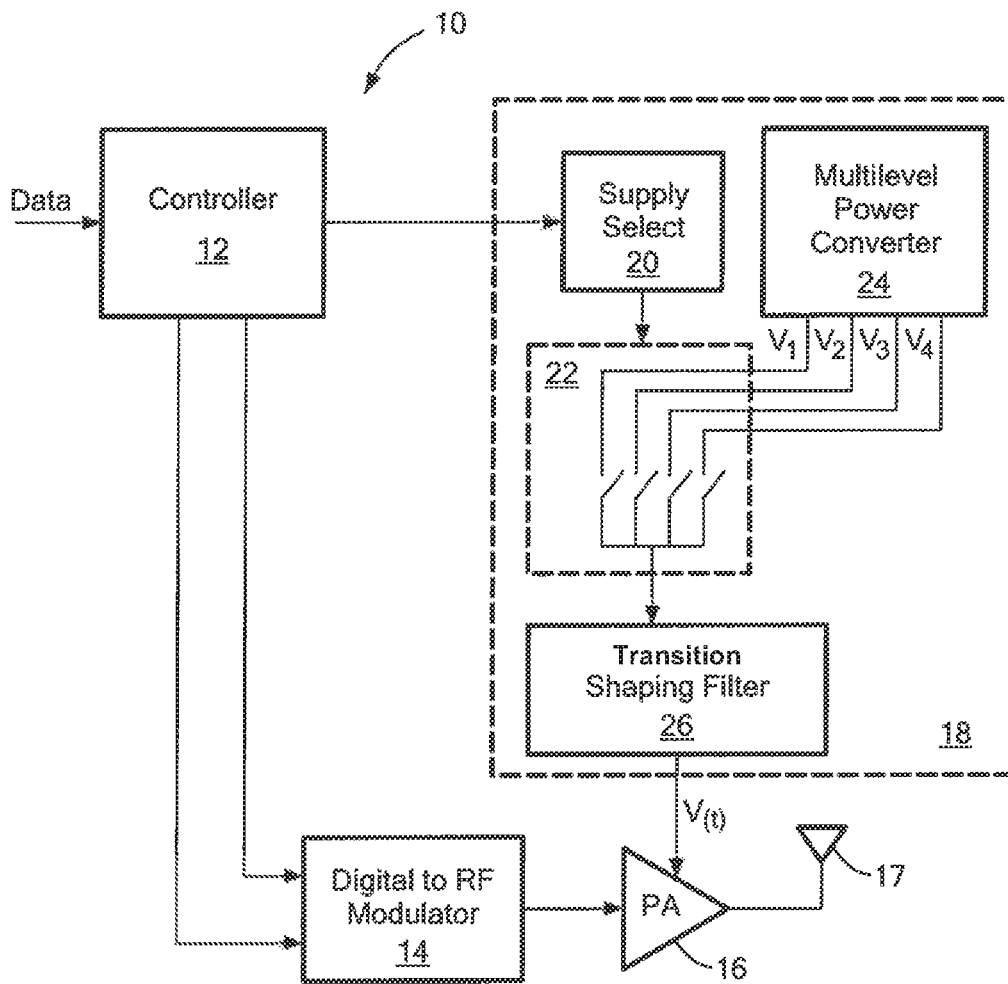


FIG. 1

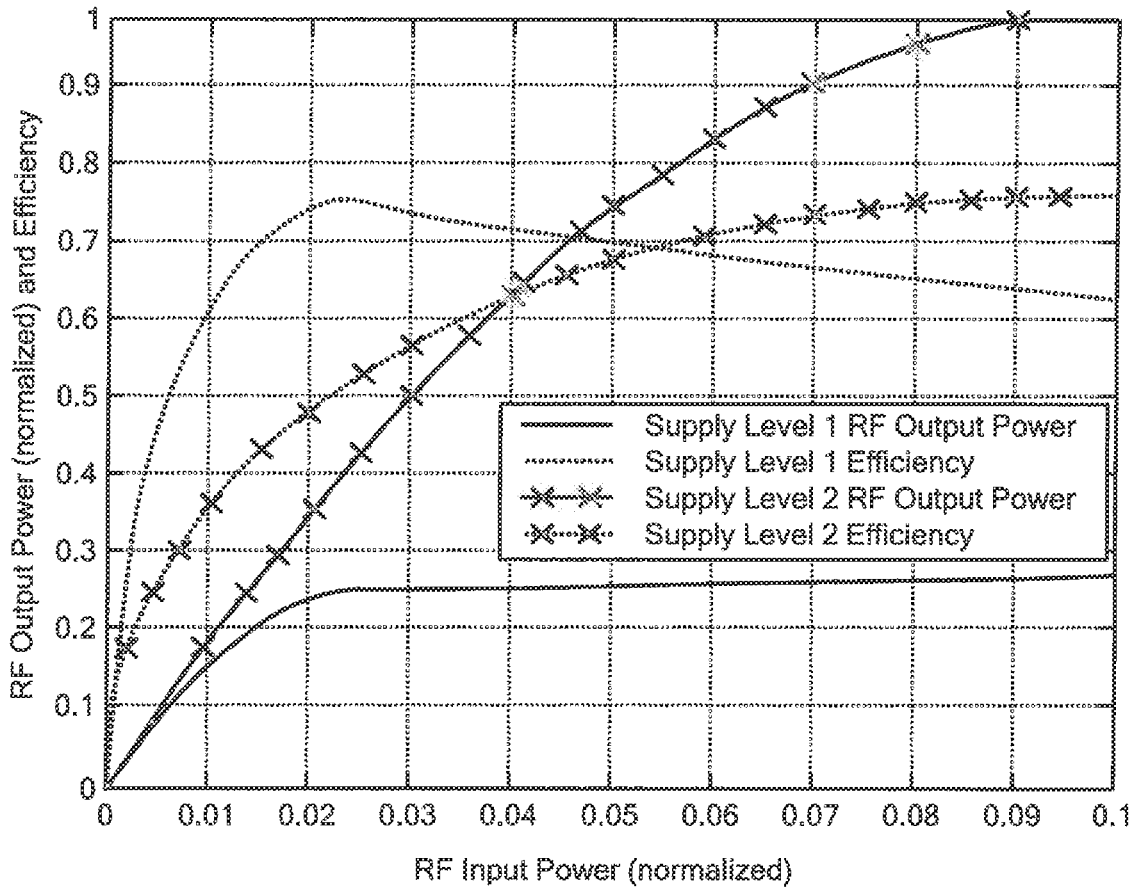


FIG. 2

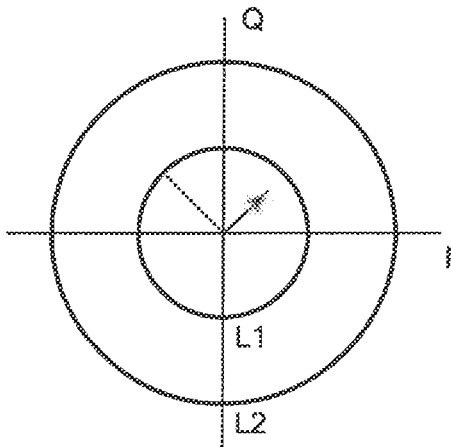


FIG. 3

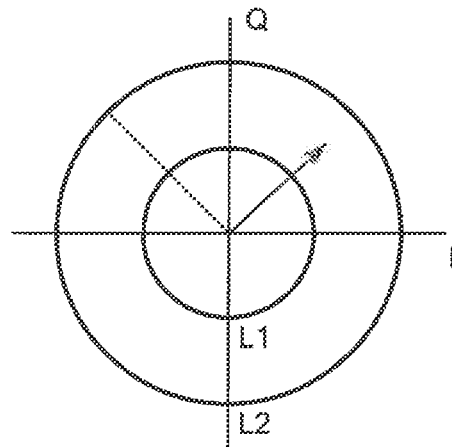


FIG. 3A

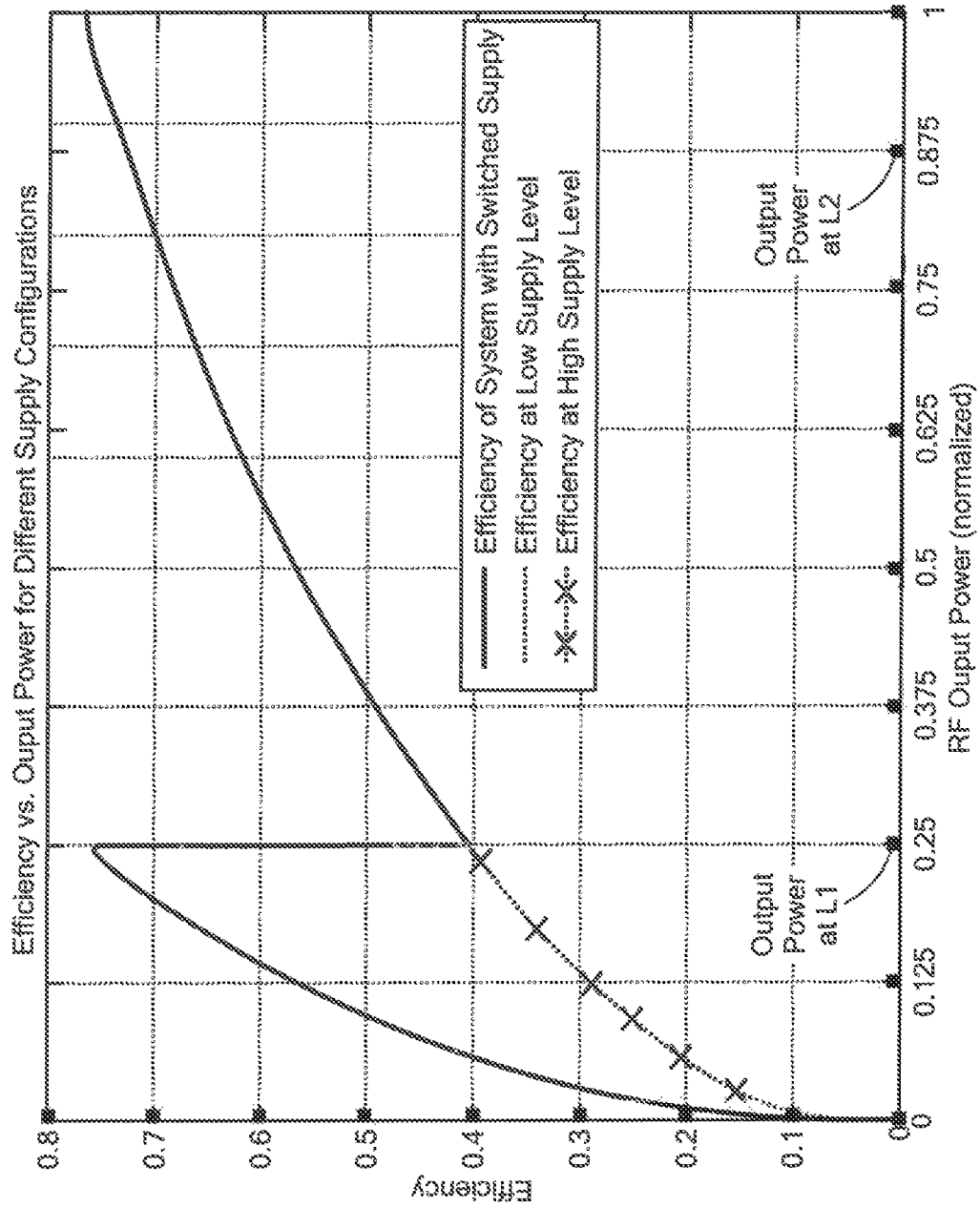


FIG. 4

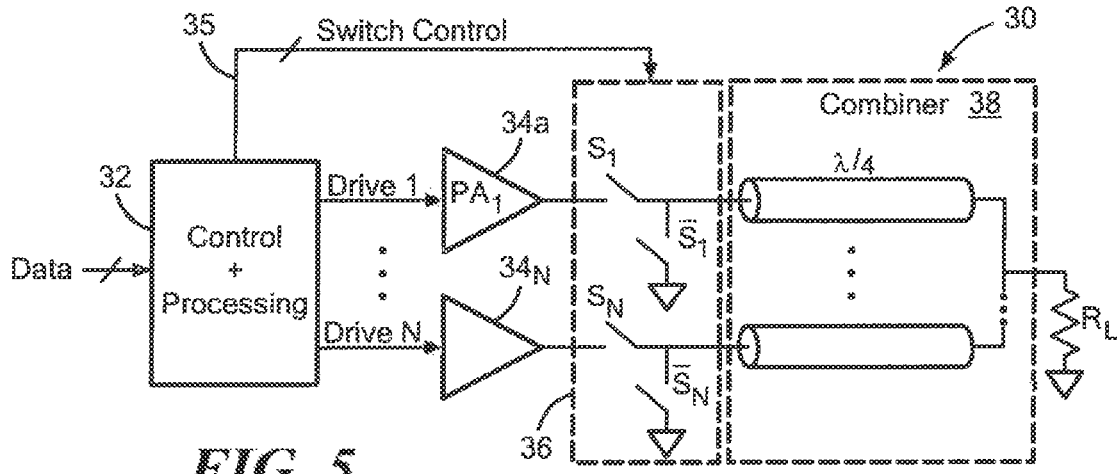


FIG. 5

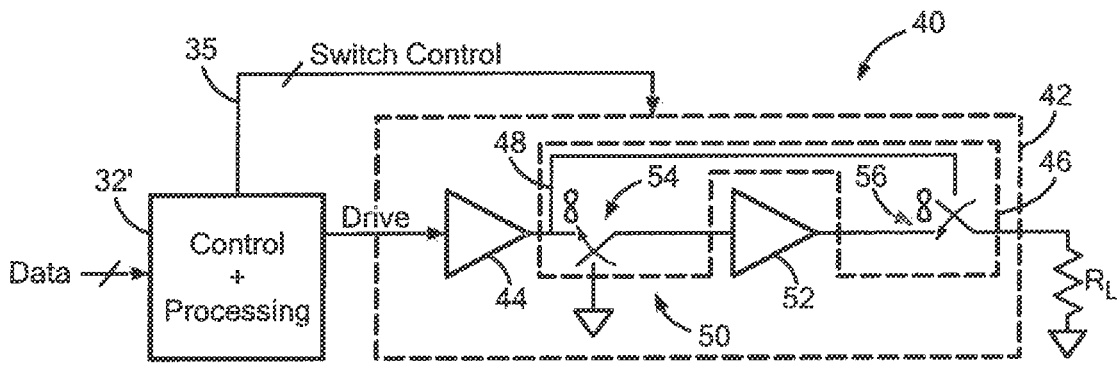


FIG. 6

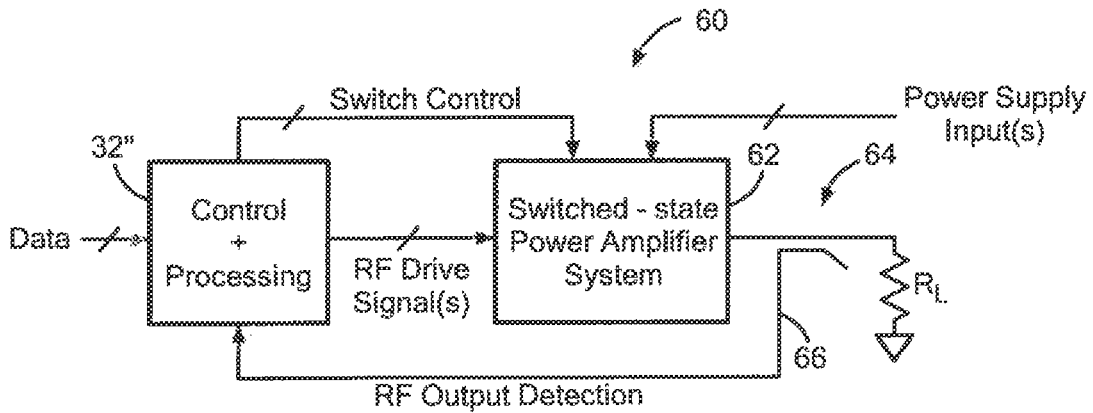


FIG. 7

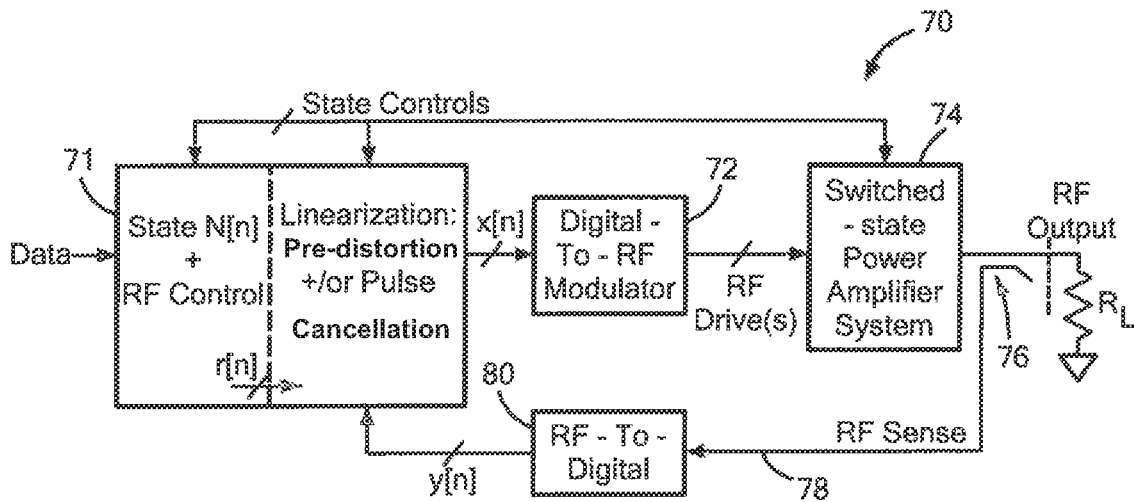


FIG. 8

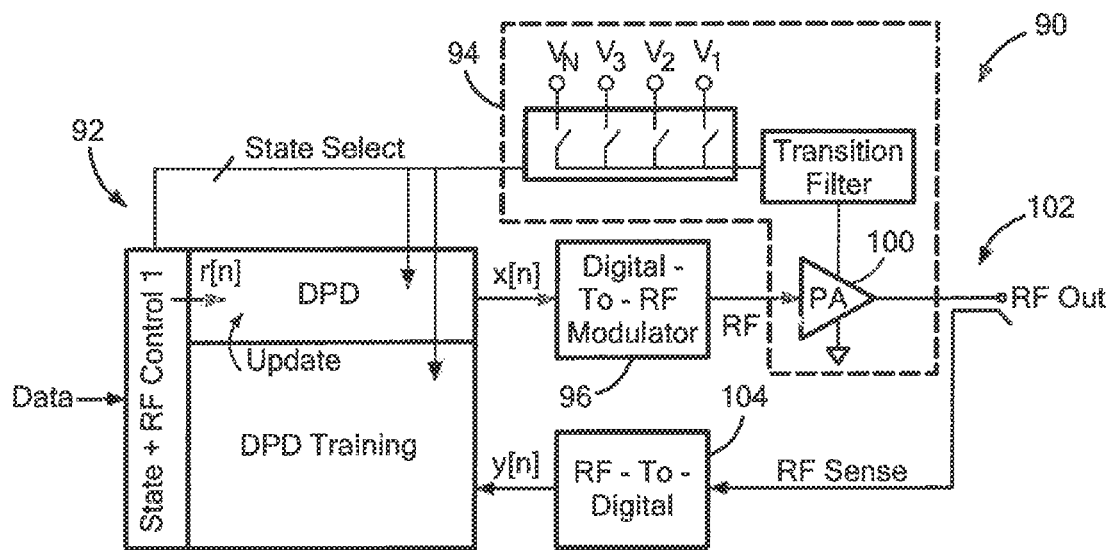


FIG. 9

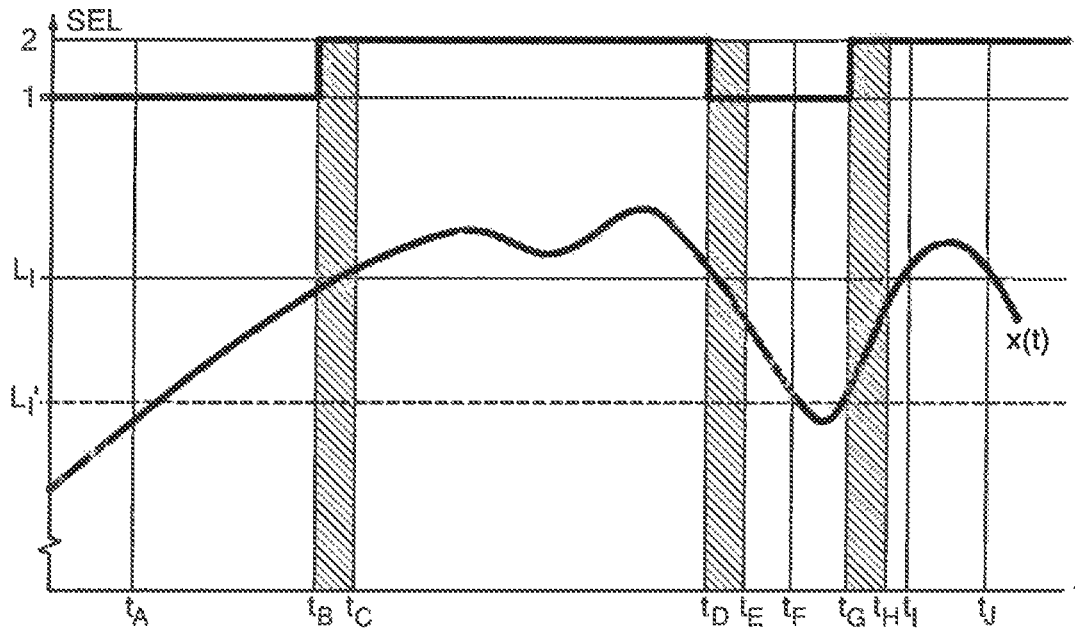


FIG. 10

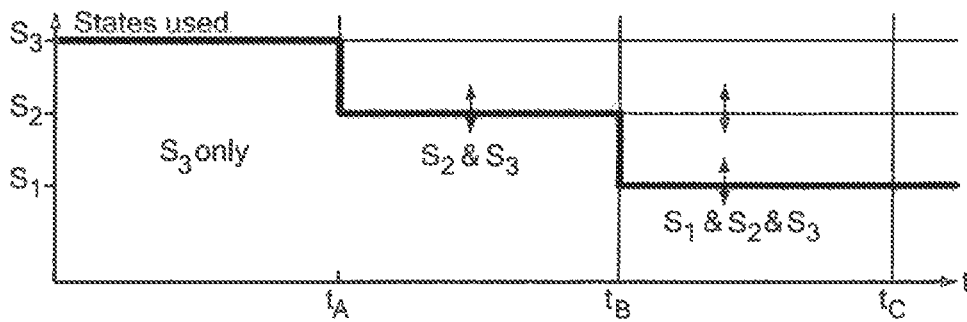


FIG. 11

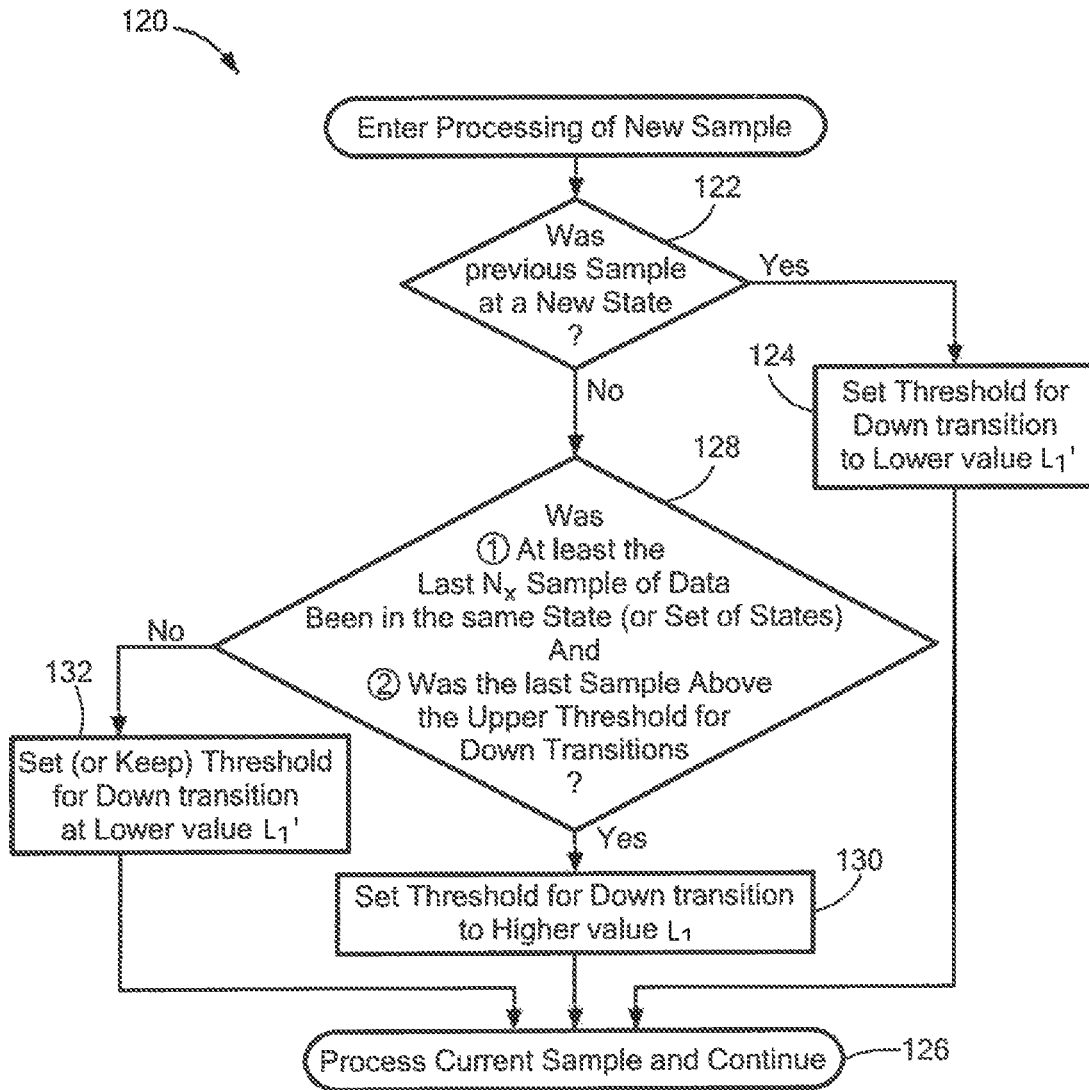


FIG. 12

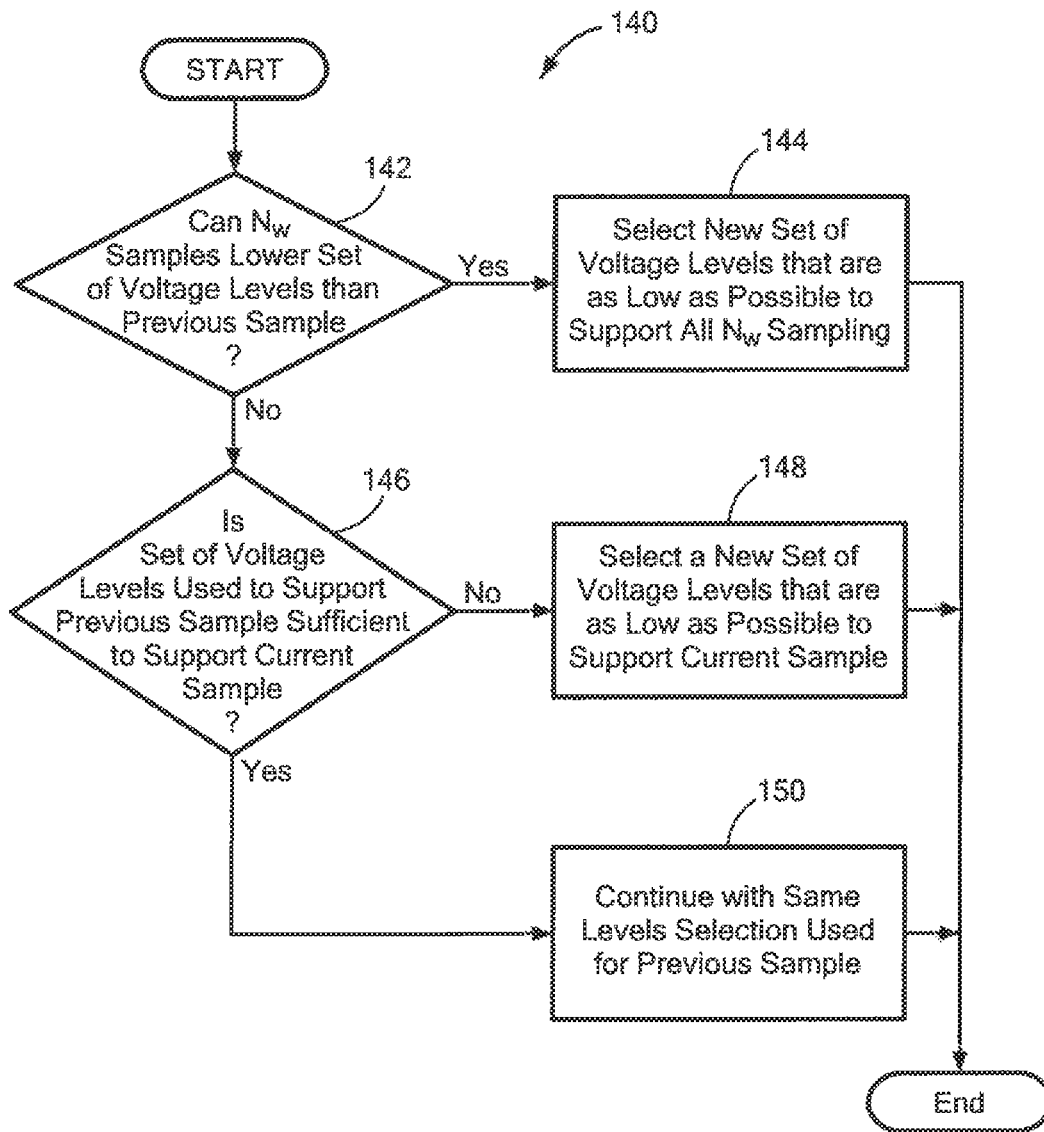


FIG. 13

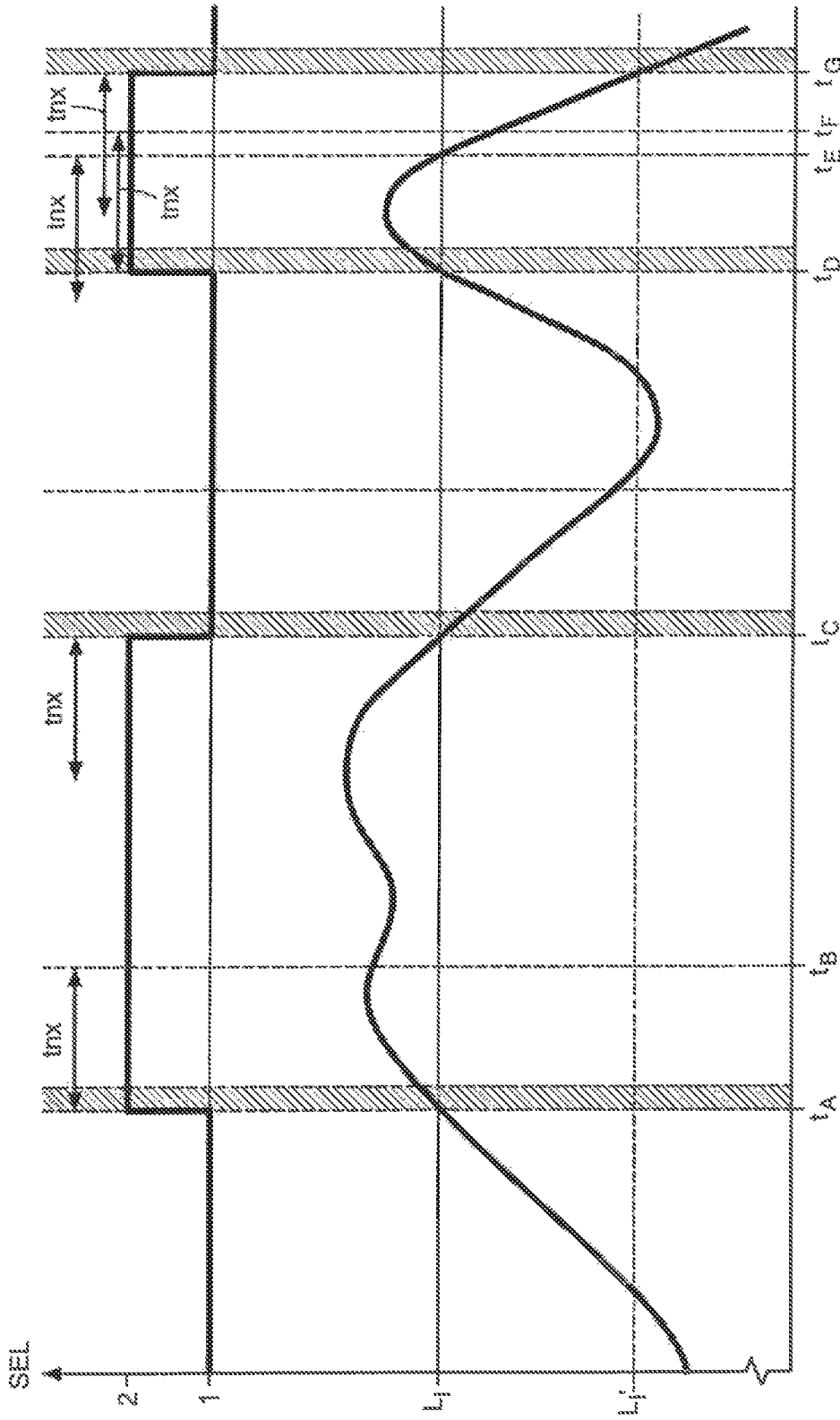


FIG. 14

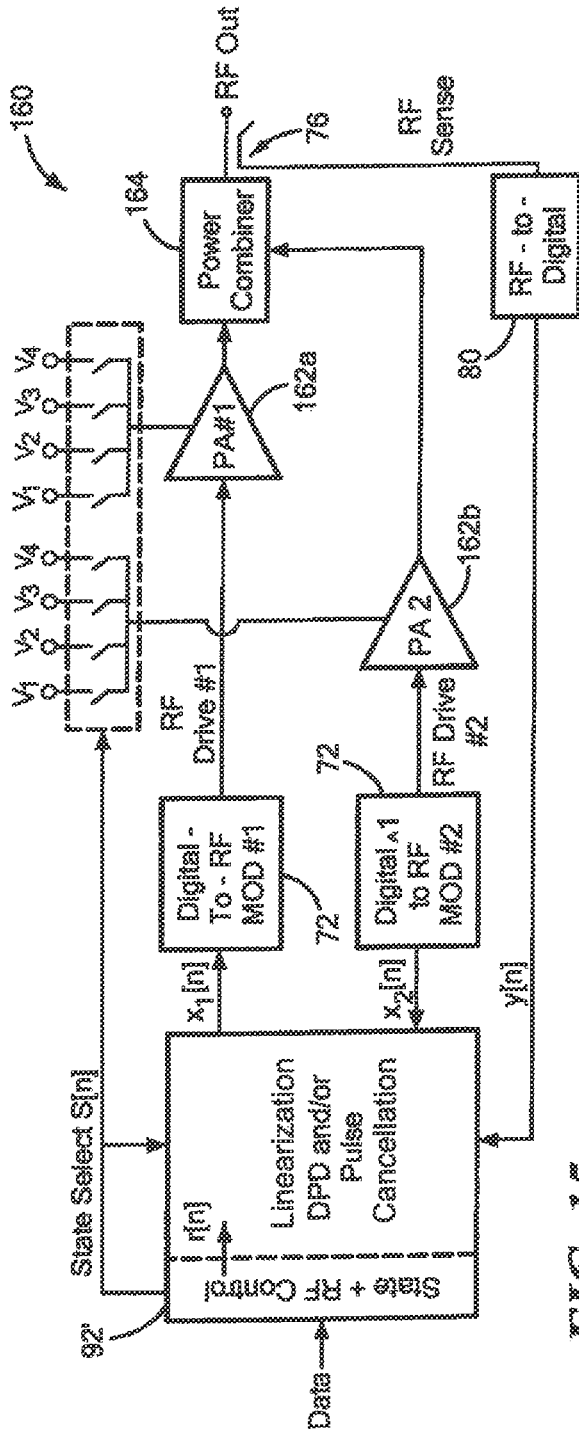


FIG. 15

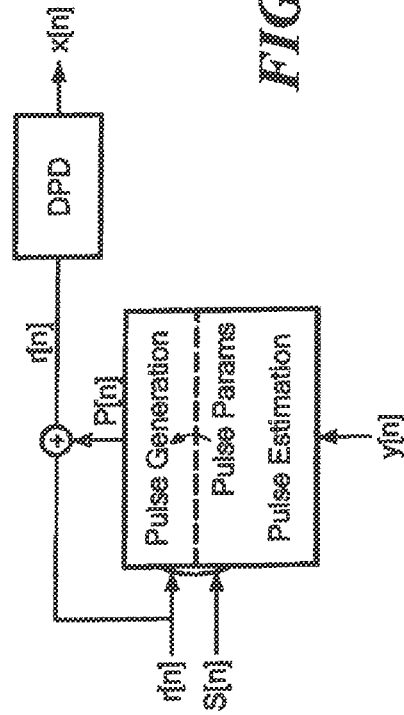


FIG. 16

LINEARIZATION CIRCUITS AND METHODS FOR MULTILEVEL POWER AMPLIFIER SYSTEMS

CROSS REFERENCE TO RELATED APPLICATIONS

This application is a continuation of co-pending U.S. application Ser. No. 14/837,616 (filed Aug. 27, 2015). This application is also a continuation of co-pending U.S. application Ser. No. 14/064,572 (filed Oct. 28, 2013). Application Ser. No. 14/064,572 is also a continuation of U.S. application Ser. No. 13/833,050 (filed Mar. 15, 2013). Application Ser. No. 14/837,616 is also a continuation of U.S. application Ser. No. 13/955,952 (filed Jul. 31, 2013) and a continuation of application Ser. No. 13/833,050. Application Ser. No. 13/833,050 is continuation-in-part of U.S. application Ser. Nos. 13/663,878 (filed Oct. 30, 2012) and Ser. No. 13/663,887 (filed Oct. 30, 2012), and which also claims the benefit of U.S. Provisional Application No. 61/730,214 (filed on Nov. 27, 2012). All the applications listed in this paragraph are incorporated here by reference in their entireties.

STATEMENT REGARDING FEDERALLY SPONSORED RESEARCH

Not Applicable.

FIELD

Subject matter disclosed herein relates generally to radio frequency (RF) systems and, more particularly, to circuits and techniques for multilevel power amplifier systems.

BACKGROUND

As is known in the art, achieving both high efficiency and high linearity in radio frequency (RF) power amplifier systems is a longstanding challenge. One means of improving efficiency in such systems is an architecture wherein the power amplifier system is switched with discrete transitions among a set of operating states. For example, this includes an RF amplifier system in which the drain bias voltage for the one or more power amplifiers provided as part of the RF power amplifier system is dynamically selected from more than one possible source or level (e.g., selected from among multiple discrete supply voltages.)

A range of power amplifier systems exist in which the drain bias for one or more power amplifiers forming the power amplifier system is provided via dynamic selection from among a plurality of sources. For example, some prior art systems dynamically select drain bias voltages from among a discrete set of input supply voltages and then provide additional regulation to provide a continuously-varying drain voltage (e.g., for partially realizing a desired envelope in the output). Other prior art systems directly exploit discrete drain levels, including “class G” amplifiers, multi-level LINC (MLINC) Power Amplifiers, Asymmetric Multilevel Outphasing (AMO) Power Amplifiers, and Multilevel Backoff amplifiers.

SUMMARY

Alternatively, and in accordance with one aspect of the concepts systems and techniques described herein, it has been recognized that one can provide a power amplifier

system that switches among a set of discrete levels for some operating conditions, and switches the drain bias to an input that provides continuous envelope tracking for other conditions. Such conditions might include when operating at very low bandwidths or power levels, such that the efficiency penalty of continuous envelope tracking is not as severe.

Also described are concepts, circuits, systems and methods for achieving high linearity, high efficiency power amplifiers, including digital predistortion (DPD) and pulse cancellation in switched-state RF power amplifier systems. This includes concepts, circuits, systems and methods for providing improved linearity in power amplifier systems in which component power amplifier(s) are switched among a set of operating states. This includes, for example, RF amplifier systems having one or more power amplifiers and in which the drain bias voltage for at least one of the one or more power amplifiers (PAs) in the RF amplifier system is dynamically selected from more than one possible source or level (e.g., switched between multiple discrete supply voltages.)

Because the characteristics of a switched-state power amplifier vary in practice with the selected state (e.g., with the selected drain voltage supply), also described herein is a system in which the signal predistortion used to enhance linearity is indexed in part by the selected state of the system. Such State-Based (or Supply-Based) Digital Pre-Distortion (SB-DPD) enables smooth (high-linearity) output to be maintained from a switched-state power amplifier system as the operation of the system is switched among different states.

Moreover, when a switched state power amplifier system is changed among different discrete states, undesired components may be injected into the PA output during and around the transition (e.g., because the PA drain bias acts as an additional input that causes transients in the output when the drain bias varies owing to supply switching). Also addressed is the problem of state changes introducing unwanted components in the output spectrum by introducing a “pulse cancellation” technique, wherein the effects of the disturbance (e.g., at the drain input of the PA) on the RF output are compensated (or “cancelled”) at the PA output by a cancellation signal introduced via the RF drive input of the transitioning PA or a different PA.

Also described herein are concepts directed towards a means for achieving high linearity in RF power amplifier systems, thereby yielding RF power amplifier systems having both high efficiency and high linearity.

In accordance with a further aspect of the concepts, systems, circuits, and techniques described herein a power amplifier system includes a switching system that switches among a set of discrete levels for some operating conditions, and switches a drain bias to an input that provides continuous envelope tracking for other conditions.

In accordance with a further aspect of the concepts, systems, circuits, and techniques described herein, a method includes digital predistortion (DPD) and pulse cancellation in switched-state RF power amplifier systems to provide high linearity, high efficiency power amplifiers.

In accordance with a further aspect of the concepts, systems, circuits, and techniques described herein, a circuit for providing improved linearity in power amplifier systems in which component power amplifier(s) are switched among a set of operating states includes an RF amplifier system in which a drain bias voltage for the one or more constituent power amplifiers comprising the RF amplifier system is dynamically selected from more than one possible source or level.

In accordance with a still further aspect of the concepts, systems, circuits, and techniques described herein, a system in which signal predistortion used to enhance linearity is indexed, at least in part, by a selected state of the system.

In accordance with a still further aspect of the concepts, systems, circuits, and techniques described herein, a state-based (or supply-based) digital pre-distortion (SB-DPD) system which enables smooth (high-linearity) output to be maintained from a switched-state power amplifier system as the operation of the system is switched among different states.

In accordance with a further aspect of the concepts, systems, circuits, and techniques described herein, a system comprising means for providing pulse cancellation to cancel undesired signal components injected into an output of a switched state power amplifier system as a result of the switched state power amplifier system changing among different discrete states.

In accordance with a further aspect of the concepts, systems, circuits, and techniques described herein, a system includes cancellation means responsive to one or more unwanted signal components in an output spectrum of an RF power amplifier (PA) system. In one embodiment, the unwanted signal components are a result of state changes in the RF PA system and the cancellation means provides at least one of: (a) a cancellation signal at an RF drive input of a power amplifier giving rise the one or more unwanted signal components in the RF PA system such that the effects of the disturbance on the RF PA system output are compensated at an output of the power amplifier by the cancellation signal; or (b) a cancellation signal at an RF drive input of a power amplifier not directly giving rise the one or more unwanted signal components in the RF PA system such that the effects of the disturbance on the RF PA system output are compensated at an output of the power amplifier by the cancellation signal.

With this particular arrangement, a system and related techniques for achieving a high degree of linearity in switched-state power amplifier systems is provided.

BRIEF DESCRIPTION OF THE DRAWINGS

The foregoing features of this invention, as well as the invention itself, may be more fully understood from the following description of the drawings in which:

FIG. 1 is a block diagram of a radio frequency (RF) circuit in which a power supply bias signal coupled to a power amplifier (PA) is dynamically selected from multiple inputs depending upon one or more characteristics of the signal to be transmitted;

FIG. 2 is a plot of RF output power and efficiency vs. RF input power for two different direct current (DC) supply levels: a first level (level 1) and a second level (level 2);

FIGS. 3 and 3A are IQ diagrams showing the range of output RF output amplitudes (phasor lengths) achievable with two different DC supply levels: a lower level (L1) and a higher level (L2);

FIG. 4 is a plot of Efficiency vs. RF output power for different PA power supply configurations, including for dynamically switching among two power supply levels based upon desired RF output amplitude;

FIG. 5 is a block diagram of a system which dynamically switches a number of power amplifiers which supply an output and compensate an input drive to achieve a desired output power;

FIG. 6 is a block diagram of a system having gain-stage switching;

FIG. 7 is a block diagram of a switched-state power amplifier system;

FIG. 8 is a block diagram of an RF amplifier including a state-based digital predistortion (SB-DPD) system;

FIG. 9 is a block diagram of an RF amplifier with a switched power supply and including a state-based digital predistortion (SB-DPD) system;

FIG. 10 is a plot of switching threshold values, signal amplitude and level selection versus time;

FIG. 11 is a plot of discrete states versus time;

FIG. 12 is a flow diagram of a process for dynamically selecting transition thresholds;

FIG. 13 is a flow diagram of a process for selecting levels;

FIG. 14 is a plot of switching threshold values, signal amplitude and level select versus time;

FIG. 15 is a block diagram of a system having two power amplifiers each of which can have their drain supply voltage selected from a plurality of voltages, along with a power combiner to combine the individual PA outputs into a single output and a subsystem for controlling the power amplifiers; and

FIG. 16 is a block diagram of a pulse cancellation portion of the linearization block in FIG. 8.

DETAILED DESCRIPTION

Referring now to FIG. 1, an exemplary system 10 in which there is dynamic switching of a drain bias. System 10 may correspond, for example, to an exemplary RF transmitter 10 having an input source 24 (e.g. a power supply) providing multiple levels that can be coupled to a power supply input of a radio frequency (RF) amplifier, which in this exemplary embodiment is provided as an RF power amplifier (PA).

As shown, RF system 10 includes a controller 12 having an input configured to accept data provided thereto and one or more outputs coupled to a digital to RF modulator 14. An output of digital to RF modulator 14 is coupled to an input of an RF amplifier 16, here shown as an RF power amplifier 16, and an output of RF amplifier 16 is coupled to inputs of one or more antennas 17 to facilitate the transmission of RF transmit signals to remote wireless entities (not illustrated in FIG. 1).

Controller 12 also has an output coupled to a voltage control unit 18. Voltage control unit 18 may provide a variable supply voltage $V(t)$ to a bias terminal of RF amplifier 186. The signal characteristics of the variable supply voltage $V(t)$ are based, at least in part, upon a value or characteristic of a control signal provided by controller 12. In one exemplary embodiment, digital to RF modulator 14 provides an RF input signal to power amplifier 16 based upon input information (e.g., I_1 , Q_1) received from controller 12. Controller 12 may use any of the control techniques described herein. In some implementations, controller 12 may use voltage control of voltage control unit 18 and the amplitude and phase information delivered to digital to RF modulator 14 to ensure that the transmit data is accurately represented within the RF output signal of RF transmitter 10. Controller 12 may use amplitude information delivered to digital to RF modulator 14 to control/adjust an output power level of RF transmitter 10 (e.g., a transmit power level). In some implementations, this output power control capability may be used to provide power backoff for RF transmitter 10.

In the voltage control unit 18, voltage control unit 18 includes a supply select module 20 having an input coupled to controller 12 and an output coupled to a switch circuit 22 comprising a plurality of switches. Exemplary voltage con-

control unit **18** further includes a multilevel power converter **24** which provides a plurality of voltage levels. In the exemplary embodiment of FIG. **1**, multilevel power converter **24** provides four voltage levels V_1 - V_4 , and switch circuit **22** comprises a like number of switches (i.e. four switches). In general, however, switch circuit **22** comprises a switch fabric which allows any desired combination of voltages available via multilevel power converter **24** to be provided at an output of switch circuit **22**.

Exemplary voltage control unit **18** further includes a transition shaping filter **26** coupled between switch circuit output **22** and a bias terminal of RF amplifier **16**.

In the exemplary system of FIG. **1**, the power supply Input to the PA is dynamically switched among different inputs based in part upon the signal to be transmitted. The power supply inputs (e.g., V_1 , V_2 , V_3 , V_4) may correspond to fixed analog or digital voltages, or may be themselves dynamically varied based upon one or more of a desired average power level or the signal to be transmitted. The switched power supply levels may be directly applied to the PA or may be filtered to provide acceptable transitions among the power supply levels.

The system of FIG. **1** has some characteristics that can result in nonlinearity in synthesizing the output and can introduce undesired signals into the output, beyond what occurs in some conventional power amplifier (PA) implementations. This can lead to reductions in figures-of-merit such as Adjacent Channel Power Ratio (ACPR) and Error Vector Magnitude (EVM).

The exemplary system of FIG. **1** has the PA drain bias dynamically selected from different power supply sources as the input signal (or data) varies. The drain bias can act as a "second input" into the PA, such that changes in drain bias are directly reflected in the output of the PA. In one aspect, this means that the complex gain and distortion with which the PA synthesizes an output based on input data changes as the power supply input is dynamically changed. This effect can be minimized by making the power amplifier gain as insensitive to drain bias as possible. However, there is a limit to how well this can be done, and gain will still depend upon the drain bias when the power amplifier is in deep compression. Moreover, in many cases, there is not a 1:1 mapping between the instantaneous data Input and the supply level that is utilized (e.g., as occurs with power supply selection based on a window of data), making linearization more challenging.

As described in detail below, however, this challenge is addressed by introducing a DPD architecture that produces corrections that are at least in part indexed by the power supply input selection (or, more generally, the selection of states among a set of operating states that may be selected among) and/or the power supply voltage.

A second source of undesired components introduced into the PA system output is the power supply input switching among different levels. The PA drain bias supply acts as a second input (in addition to the PA RF input), such that when the PA drain bias voltage switches (e.g., among different discrete levels), a disturbance "pulse" is introduced into the RF output of the PA system. This can be partly addressed by control of the transitions among different supply levels (e.g., through transition filtering or other means.) Nevertheless, given that supply transitions can happen at a high rate, this can introduce significant energy into the output that does not represent the desired signal. The disturbances can appear as an increase in apparent "broadband noise" in the output spectrum of the power amplifier system. More generally, a temporary disturbance or pulse or other change (collectively

variation) In the output may occur when the system is switching among discrete operating modes or among states.)

As described in detail below, however, this challenge is addressed by introducing a "pulse cancellation" technique, wherein the effects of the disturbance (e.g., at the drain input of the PA) are compensated (or "cancelled") by signals introduced via the RF input of the PA. This may be done as a time- and level-dependent multiplicative correction factor applied to the digital data (corresponding to a complex multiplicative correction during the transition) and/or as a time and level-dependent additive correction applied to the digital data (corresponding to a complex pulse added to the digital data). It is noted that while the exemplary embodiments described herein at times focus on digital data, such examples are intended to promote clarity in the description of the figures and the broad concepts disclosed herein and it is recognized that the approach concepts and techniques described herein can be similarly applied to RF waveforms.

The above-described correction and cancellation measures can be implemented either Individually or in combination and when implemented in combination the above measures can provide much greater fidelity of the output in systems of the architectures considered here.

Referring now to FIG. **2** and considering the case of a system having two supply levels with level 1 corresponding to a first or lower direct current (DC) supply, and level 2 corresponding to a second or higher DC supply. FIG. **2** thus illustrates the efficiency and (normalized) output power as a function of normalized RF drive power at two different DC power supply levels. It can be seen that for the level 2 DC supply, at a certain RF input power (0.1 normalized) the output power reaches a maximum saturated output power (1 normalized). The output power can be reduced to any value below this saturated maximum (i.e., "backing off" the output power) by reducing the RF input power (or, equivalently, the RF drive amplitude provided to the RF Input of the PA). For low levels of RF input and output power, there is a nearly linear (proportional) relation between RF input power and RF output power. However, efficiency in this region is relatively low (e.g., below 40% for RF output powers below 0.25 normalized). The highest efficiency is found in regions of output power at or somewhat below the level at which output power saturates (e.g., efficiency above 70% for output power above 0.83 normalized). Increasing RF input power beyond the level that saturates the power amplifier, however, actually reduces efficiency. This occurs because total input power—DC plus RF—increases but output power does not increase (and in some cases can decrease with further increase in RF Input power).

Consider now the power and efficiency for the lower voltage DC supply (level 1). In this case, the maximum saturated output power is much lower than for the higher-voltage (level 2) DC supply (e.g., reaching a maximum output power of only 0.25 normalized). The output power can again be adjusted between zero and this lower maximum value by adjusting RF input power (e.g., backing off the output power by reducing the normalized input power to values below that which saturates the power amplifier), but higher output powers (above 0.25 normalized) are not obtainable at this supply level. It should be noted that for values of output power that can be reached at this lower supply level, higher efficiency is achieved using the lower DC supply level 1 than for the higher DC supply level 2, because the power amplifier is operated closer to its saturated value. Thus, for low values of output power, it is generally desirable to use a lower supply voltage value, so

long as the desired output power is achievable and the desired level of linearity and controllability of the power amplifier is achievable.

The variation in efficiency with a given DC voltage supply level is a motivation for power amplifier systems such as “Class G”, that switch the power amplifier DC supply among different levels depending on the desired RF output power level. Selecting from multiple DC supply values such that the power amplifier operates at as high an efficiency as possible while being able to provide the desired RF output power can yield significant improvements in efficiency over that achieved with a single supply level.

Referring now to FIGS. 3 and 3A, IQ plots are used to illustrate the achievable RF outputs in terms of the output RF amplitude (phasor length, or RF voltage amplitude) with two different supply levels. For a given supply level, there is an RF output amplitude (proportional to the square root of RF output power) that may be specified as a maximum for that supply level. This maximum amplitude may be that corresponding to the absolute maximum saturated output power (under complete compression) for that supply level, as illustrated in FIG. 1, or may be a level somewhat below this. One may limit the maximum amplitude and power to somewhat slightly lower than those for complete saturation to simplify predistortion of drive signals (for linearization), to account for part-to-part variations in absolute maximum power, to place the specified maximum level in a desirable location on the efficiency vs. output characteristic, or for other reasons. As illustrated in FIG. 3, with the higher supply level, any RF output voltage vector having an amplitude less than or equal to the radius of the circle labeled L2 can be synthesized. With the lower supply level, one can synthesize any RF output voltage vector having an amplitude less than or equal to the radius of the circle labeled L1.

Referring now to FIG. 4, to exploit the availability of multiple supply voltages to achieve increased efficiency, one may dynamically switch between the two supply levels. Switching among two (or more than two) levels offers a level of efficiency over a wide output power range that is greater (higher) than a level of efficiency which can be achieved with a single supply level. One approach for gaining such efficiency is to switch supply levels based upon the amplitude of the RF output vector being synthesized at any given time, such that the higher supply level is utilized whenever the desired output amplitude is between L1 and L2, and the lower supply level whenever the desired output amplitude is at or below L1. Doing so leads to the efficiency vs. normalized output power characteristic shown in FIG. 4. It should be noted that the efficiency curve for the low supply level is the same as the efficiency curve for the switched supply system over its operating range of 0-0.25 in RF output power. The efficiency curve for the high supply level is the same as the efficiency curve for the switched supply system over the range 0.25-1 in RF output power.

Alternatively, it is possible to examine or characterize the signal to be synthesized over a longer interval (e.g., a window of multiple digital samples) and manage switching between levels based upon a moving window of data related to one or more signal characteristics. It should be appreciated that the switching need not necessarily depend directly upon one or more signal characteristics, rather the switching may be based upon information derived or otherwise related to one or more signal characteristics. Switching may be selected to depend on considerations such as minimum and maximum values of a signal during a window, the minimum duration that a signal sits at a given level, the estimated energy costs or linearity impact of making a transition, and

other considerations. For example, it a current given supply level can support the output for an entire window, and a lower supply level can support the output for a fractional portion of the window but not the whole window, the decision to move to the lower supply level for the duration in which the lower supply is useable may depend on the duration with which the lower supply level can be used. Examples are provided in the above-referenced application Ser. No. 13/663,887 which application is hereby incorporated herein by reference.

This process could be performed, for example, in a way that ensures that the desired instantaneous output amplitude can always be synthesized, but switch down to the lower supply level only if the desired output signal amplitude will remain at a level at or below L1 for a minimum duration. Amplitude hysteresis, minimum dwell times or other constraints can likewise be put into level switching decisions. Moreover, while this is illustrated for two power supply levels, the approach is clearly extensible to an arbitrarily large number of different supply levels. One of ordinary skill in the art, after reading the description provided herein, will appreciate the factors to consider selecting the number of different supply levels for a particular application. Such factors include, but are not limited to hardware and software complexity, size and cost; desired overall efficiency, and resolution and bandwidth of control hardware.

While exemplary embodiments described herein are directed toward systems with drain bias switching, it should be appreciated that the concepts, systems and techniques described herein also directly apply to other systems and architectures including, but not limited to: systems in which there is switching of the number of amplifiers driving the output together; systems with transistor “width switching;” systems having “gain-stage switching, systems having gate bias switching, as well as systems realizing combinations of the above techniques (e.g., combining two or more of drain bias switching, gate bias switching, gain-stage switching, amplifier switching, and gate-width switching).

Thus, the concepts, systems and techniques introduced herein also directly apply to other systems and architectures having discrete transitions among different operating states (switched-state power amplifier architectures).

One example of a system in which there is switching of the number of amplifiers driving the output together is provided in the exemplary embodiment of FIG. 5, in which dynamic switching is used to select a particular number of PAs to supply an output and compensate an input drive accordingly to achieve a desired power output. Likewise included are systems with transistor “width switching” including those in which one switches among driving different portions of the gate of a PA transistor. Likewise included are systems in which one switches among driving one or more gates of multiple transistors having a common drain connection.

Referring now to FIG. 5, a system 30 includes a control and processing circuit 32 having an input at which data is provided. Control and processing circuit 32 provides drive signals to power amplifiers 34a-34N. In the exemplary embodiment of FIG. 5, control and processing unit includes N outputs each of which is coupled to a corresponding input of one of the N power amplifiers 34a-34N. Other techniques, may of course, be used to couple drive signals from control and processing unit 32 to power amplifiers 34a-34N.

Control and processing unit 32 also provides switch control signals along signal path 35 to a switch circuit 36 comprising a plurality of switch pairs S1, S1'-SN, SN' where the switches in each pair function in a complementary

fashion (e.g. S1, S1' are complementary in the sense that when switch S1 is open, switch S1' is closed and vice-versa).

The outputs from switch circuit 36 are coupled through a combiner 38 and provided to a load R_L . Combiner 38 combines signals provided thereto in any manner required so as to provide a desired signal to the load R_L . Thus, system 30 is an example of a system in which a control system dynamically selects a number of amplifiers utilized to provide an output signal to a load. In this exemplary embodiment, the dynamic selection of the number of amplifiers is accomplished by a dynamic switching technique provided by control circuit 32 and switch circuit 36. Thus, dynamic switching is used to select a particular number of PAs to supply an output and compensate an input drive accordingly to achieve a desired power output. The particular number of amplifiers to dynamically select for any application and/or at any point in time is selected in accordance with a variety of factors including, but not limited to the desired output power level, the characteristics of the amplifiers (e.g. gain, power handling capability, power output rating, etc.), the characteristics of the switch circuit 36 (e.g. insertion loss characteristics, input and output return loss characteristics, switching speed, power handling capability, etc.) and the characteristics of the combiner circuit 38 (e.g. insertion loss characteristics, input and output return loss characteristics, power handling capability, etc.).

Referring now to FIG. 6, the concepts, systems and techniques described herein also find application in systems having "gain-stage switching," in which a variable number of gain stages are used depending upon operating point (as shown in FIG. 6). This also includes systems realizing combinations of the above techniques (e.g., combining two or more of drain bias switching, gain-stage switching, amplifier switching, and gate-width switching).

Turning now to FIG. 6, a system 40, a control and processing circuit 32' having an input at which data is provided. Control and processing circuit 32' may be the same as or similar to, control and processing circuit 32 described above in conjunction with FIG. 5. Control and processing circuit 32' provides drive signal(s) to one or more signal paths 42 (with only one such signal path 42 being shown in FIG. 6) with each such signal path including at least one amplifier 44 (here corresponding to a power amplifier 44) and one or more additional gain stages 46. Each gain stage 46 includes a first no gain signal path 48 and a second gain signal path 50 which includes an amplifier 52 (or other gain providing element or device 52). One or more switching elements 54, 56 (or other means) are disposed to direct signals provided to gain stage 46 to either the no gain signal path 48 or gain signal path 50. Thus, in response to control signals provided thereto from control and processing unit 32', switching elements 54, 56 are operated to either utilize or bypass amplifier 52 depending upon the needs of the particular application.

It should be appreciated that the concepts, systems, circuit and techniques described herein may be utilized in switched-state power amplifier systems (or transmitters) as illustrated in FIG. 7, and including the exemplary implementation of FIG. 1. It is noted that there can be a need for such a system to faithfully produce a desired output waveform (e.g., as represented by digital data provided to a power amplifier system or by an RF input signal), with little error in the output. A linear relationship between the signal represented by the input data and the RF output of the PA is desired. To achieve the high degree of fidelity required in modern communications standards, some amount of linearization of the PA input-output characteristic is usually needed, such as

Digital Pre-Distortion (DPD) of the data input to the power amplifier. It is further noted, that while illustrations such as FIG. 7 illustrate a system with a single RF output, the concepts, systems and techniques described herein explicitly apply to systems with multiple data inputs and/or multiple RF outputs, such as "multi-input multi-output" (MIMO) transmitter systems.

Turning now to FIG. 7, a system 60 includes a control and processing circuit 32" having an input at which data is provided. Control and processing circuit 32" may be the same as or similar to, control and processing circuits 32, 32' described above in conjunction with FIGS. 5 and 8. Control and processing circuit 32" provides drive signal(s) and state control signals to one or more switched-state power amplifier systems 62 (with only one such system 62 being shown in FIG. 7). An output of switched-state power amplifier system 62 is coupled to a load R_L . A coupler 64 couples a portion of the switched-state power amplifier system output signal along an RF output signal detection signal path 66 to an input of control and processing circuit 32".

Referring now to FIG. 8, a system 70 implementing state-based (or supply-based) digital pre-distortion (SB-DPD) includes a command and control circuit 71 which generates state and RF control signals as well as linearization signals (e.g. predistortion and/or pulse cancellation signals) in response to signals provided thereto.

In response to signals provided at Inputs thereof, command and control circuit 71 provides state control signals to a linearization (e.g. predistortion and/or pulse cancellation) portion of command and an input of a switched-state power amplifier system 74 and also provides predistorted waveform signals $x[n]$ to an Input of a digital-to-RF modulator 72. Digital-to-RF modulator 72 receives the digital signals provided thereto from command and control circuit 71 and provides corresponding RF signals to an Input of a switched-state power amplifier system 74.

An output of switched-state power amplifier system 74 is coupled to a load R_L . A coupler 76 couples a portion of the switched-state power amplifier system output signal along a signal path 78 to an input of an RF-to-digital processing element 80 which converts the sensed RF signals provided thereto to digital signals $y[n]$ representative of the sensed signals and provides sensed content $y[n]$ to an input of the command and control circuit 71.

Such state-based digital pre-distortion enables smooth (e.g. high-linearity) output to be maintained from a switched-state power amplifier system (e.g. such as that described above in conjunction with FIG. 7) as the operation is switched among different states (e.g., as the drain-bias voltage of the PA is switched among different inputs in the system of FIG. 1.)

It should be noted that while exemplary embodiments such as that shown in FIG. 8 illustrate a system with a single RF output, the concepts, systems and techniques described herein explicitly apply to systems with multiple data inputs and/or multiple RF outputs, such as "multi-input multi-output" (MIMO) transmitter systems.

Referring now to FIG. 9, an exemplary system 90 implementing SB-DPD includes a control and command system 92 which accepts digital data as an input; this may be provided as a series of digital words representing samples of the I and Q signals, as equivalent complex numbers, as digital representations of amplitude and phase or related representations of the baseband data to be transmitted at the RF output. To efficiently generate the RF output across high peak-to-average power ratios, a state and RF control system 94 converts the digital data into a combination of one or

more state commands (i.e., selecting a power supply input, PA configuration, etc.) and one or more RF drive commands (setting magnitude and phase of the RF drive to the PA input(s)). The state command modulates the state of the switched-state power amplifier system **94** (i.e., selecting the power supply input for the PA), while the RF drive command $x[n]$ is converted to RF by a digital-to-RF modulator **96**. The resulting output of a PA **100** is measured via a coupler **102** or other sensing device or element or technique, and the sensed response is provided to an RF-to-digital modulator **104** and transformed into digital form $y[n]$.

The RF signal delivered from digital to RF modulator **96** to the RF input of PA **100** is adjusted (e.g., in amplitude and/or phase) to compensate for the discrete changes in the state of the power amplifier system such that the RF output appropriately represents the data provided for transmission. To accomplish this, accurate time alignment between the state control commands and the RF drive provided to the power amplifier is needed. This alignment can be accomplished by adjusting the relative timing of the signals, with feedback provided by the sensed RF output. Looking at the response of changes in output signal to state and RF drive changes individually and together (e.g., such as by using autocorrelations between commanded and transmitted responses and/or by adjusting relevant alignments in order to minimize error between the input and transmitted signals) provides the means to accomplish this. This alignment may be adjusted as a function of the state in order to provide the best operation across the range of states.

Nonlinearity and time variation of the input-output characteristics of the PA are important constraints on the overall system performance (e.g., in specifications such as EVM and ACPR). In accordance with the concepts, systems and techniques described herein, digital pre-distortion (DPD) is utilized to predistort a desired RF command $r[n]$ into a new command $x[n]$ such that the RF output (and its sensed content $y[n]$) accurately reflects the desired data. Because the power amplifier characteristics of a switched-state power amplifier vary in practice with the selected state (e.g., with the selected drain voltage supply), a system in which the predistortion is indexed in part by the selected state of the system is described. Firstly, this means that the data selected for computing a predistorted waveform such as $x[n]$ (such as a predistortion lookup table (LUT) mapping r to x , for instance) will be indexed in part by the selected state. In addition, there may be further indexing based on the time (or number of samples) duration from the last state selection change and/or the signal level at the time of the change. For example, separately-indexed tables may be utilized in converting r to x for brief durations after a transition, in order to account for the finite non-zero duration of practical transitions among states. It should be recognized that this approach can be used with different forms of predistortion, including those that incorporate memory (polynomial fits, piecewise linear fits, memory polynomials and other techniques as are known in the art). In systems incorporating memory, one may choose to adjust the information representing memory or history (e.g., previous state data) to reflect the effects of commanded “switched state” changes.

In many systems and in keeping with the concepts, systems, circuit and techniques described herein, the digital predistorter is trained (intermittently or continuously) to identify the correct mapping to provide linearization. As illustrated in FIG. 9, this can be accomplished in an “indirect” learning method, in which a DPD system is trained on samples of transmitted data, and the updated result from training (i.e., an updated mapping of r to x) is periodically

transferred to be used in predistorting data. In accordance with the present concepts, systems, circuits and techniques described herein, the DPD training may also be partially indexed by one or more of the selected state of the PA system, the duration since the last transition and the signal level at the transition point. That is, by having the DPD training subsystem respond to what state is selected, DPD data can be generated that is correctly indexed by selected state and other variables of interest.

It should be appreciated that the predistorter and/or predistortion training system may be designed to window or gate captured output data such that training for a given state selection (e.g., supply level selection) is not corrupted or influenced by transient behavior during state switching. So, for example, captured data within a certain number of samples of a state transition (e.g., supply selection transition) may be blanked or gated from inclusion in training of a particular target state (e.g., selected supply level) during the transition among states. Data for training the DPD for output levels near the transition points can still be available from transmit data where the desired output goes near a desired transition point but does not cross it. Moreover, the system can be designed such that there are multiple possible state transition points relative to signal level, such that there will be DPD training data available for all needed signal levels even though there is blanking or gating during transitions. Data that is blanked from training for a target state selection may be included in training for linearization of transition periods.

Referring now to FIG. 10, a plot of level vs. time is shown. The aspects described above in conjunction with FIG. 9 are illustrated in FIG. 10. In FIG. 10, $x(t)$ is an envelope of a transmit signal, L_1 is a first switching threshold used for switching between discrete states 1 and 2 (e.g., selection from power supply 1 and power supply 2), L_1' is a second switching threshold used for switching between states 1 and 2, “SEL” indicates the selection between states 1 and 2, and the “greyed” sections of the plot indicate gating or blanking windows during which the state may be in a transition period (e.g., the supply voltage provided to the PA is transitioning between that of supply inputs 1 and 2, the power amplifier is in a transient state owing to such a transition, etc.) Prior to time t_0 , the system is in state 1, and the captured response (of the sensed output) is used to train the DPD for linearization of discrete state 1. At t_0 , threshold L_1 is crossed in the positive direction, and the system initiates switching to discrete state 2. This transition may take a finite nonzero time (e.g., for the supply voltage provided to the PA to settle to a new level associated with state 2). Consequently, the duration between t_B and t_C is not used for training the DPD for linearization for state 2, though it may be used for linearization of the system during the transition (e.g., populating predistortion information for linearization during the state 1 to state 2 transition, for pulse cancellation, etc.) Nevertheless, data for linearizing the system in state 2 for the appropriate level of signal $x(t)$ (just above L_1) is available from other time points in the signal (e.g., between t_C and t_D and between t_f and t_j). Likewise, data from between times t_D and t_E are not used to provide information for predistortion indexed for state 1, but other data (such as between t_A and t_B) is available for this purpose. It is also notable that the use of the second switching threshold L_1' for transition from state 1 to state 2 for some transitions (e.g., at time t_G) enables additional linearization data for state 2 to be captured (e.g., from the response after t_H) beyond that available if only a single transition threshold were provided. Utilization of multiple transition thresholds

between two states is thus used to benefit linearization of the system. Moreover, one can use multiple transition thresholds to increase durations and/or guarantee minimum durations in particular states (e.g., the duration of the state 2 after t_C is longer owing to the use of L_1' than if L_1 were used on that transition.) In all of the above, it should be noted that one might select different transition thresholds for “positive/up” and “negative/down” transitions. Lastly, one may have additional predistortion tables for during the transient duration of specific transitions (e.g., one or more sets of separate DPD parameters/tables/indices used for transient durations as between t_B and t_C-1 to 2 switching at L_1 ; between t_D and t_E-2 to 1 switching at L_1 ; and between t_G and t_H-1 to 2 switching at L_1' .)

Embodiments of the proposed system may dynamically select among multiple (e.g., a discrete set) or variable transition thresholds for selecting among states in order to provide increased performance and/or to ensure sufficient durations in particular states while maintaining high efficiency. (These transition thresholds may also be adapted over time or to match the characteristics of individual power amplifiers.)

FIGS. 12 and 13 are flow diagrams showing the processing performed by a processing apparatus which may, for example, be provided as part of an SB-DPD system such as that described in any of FIGS. 1-11 and 14-16. The rectangular elements (e.g. block 124 in FIG. 12) in the flow diagrams are herein denoted “processing blocks” and represent steps or instructions or groups of instructions. Some of the processing blocks can represent an empirical procedure or a database while others can represent computer software instructions or groups of instructions. The diamond shaped elements in the flow diagrams (e.g. block 122 in FIG. 12) are herein denoted “decision blocks” and represent steps or instructions or groups of instructions which affect the processing of the processing blocks. Thus, some of the processes described in the flow diagram may be implemented via computer software while others may be implemented in a different manner e.g. via an empirical procedure.

Alternatively, some of the processing and decision blocks can represent processes performed by functionally equivalent circuits such as a digital signal processor (DSP) circuit or an application specific integrated circuit (ASIC). The flow diagrams do not depict the syntax of any particular programming language. Rather, the flow diagrams illustrate the functional information one of ordinary skill in the art requires to perform the processes or to fabricate circuits or to generate computer software to perform the processing required of the particular apparatus. It should be noted that where computer software can be used, many routine program elements, such as initialization of loops and variables and the use of temporary variables are not shown. It will be appreciated by those of ordinary skill in the art that unless otherwise indicated herein, the particular sequence of processes described is illustrative only and can be varied without departing from the spirit of the concepts, systems and techniques disclosed herein.

In FIG. 12, an exemplary process for dynamically selecting transition thresholds is illustrated. The resulting thresholds (updated at each sample point) can be used either with “instantaneous” level selection (i.e., based only on the relative value of the current sample with respect to the selected switching threshold(s)), or with more sophisticated level selection techniques such as that shown in FIG. 13. Representative resulting waveforms are shown in FIG. 14.

Turning now to FIG. 12, the processing of a new sample begins as shown in decision block 122 where a decision is

made as whether a previous sample was at a new state. If a decision is made that previous sample was at a new state, then processing proceeds to processing block 124 where a threshold is set for a down transition to a lower threshold value L_1' . Processing then proceeds to processing block 126 where the current sample is processed and processing continues.

If in decision block 122 a decision is made that previous sample was not at a new state, then processing proceeds to decision block 128. In decision block 128 two conditions are checked: (1) have at least the last N_x samples of data been in the same state (or set of states); and (2) was the last sample above the upper value used for “down” transition situations. If these two conditions are both satisfied, then processing proceeds to processing block 130 in which the threshold for “down” transitions is set to the upper level L_1 . Processing then proceeds to processing block 126 where the current sample is processed and processing continues.

If in decision block 128, a decision is made that at least one of these two conditions are not satisfied, then processing proceeds to processing block 132 in which the threshold for down transitions is set (or held) at the lower value of L_1' . Processing then proceeds to processing block 126 where the current sample is processed and processing continues.

Thus, the exemplary transition threshold selection technique described in conjunction with FIG. 12 uses a single threshold (in each state) for “up” transitions (level L_1) but for “down” transitions from a given state the threshold is selected among two values (a higher value L_1 or a lower value L_1') depending upon circumstances (the L_1 value could be different for up and down transitions, but they are shown as the same here for simplicity.) When processing each sample, before making transition decisions, the threshold level(s) are updated (one can update the “up” thresholds individually or for all states together). Alternatively, it is possible to update the “down” threshold for the state selection used in the previous sample.) If the previous sample used a state selection different than that of the sample before, (a “new” state on the previous sample), the threshold for down transitions is set to the lower value L_1' . Otherwise, it is checked if both: 1.) the state selection was the same for the last N samples (a “minimum” duration) and 2.) the signal at the last sample is above the upper value used for “down” transitions L_1 . If so, the threshold for “down” transitions is set to the upper level L_1 ; otherwise it is held at the lower value of L_1' . The resulting selected threshold is then used to make level selection decisions according to the technique selected (e.g., as in FIG. 13).

FIG. 13 is thus a flow diagram of a process for selecting levels. The technique described in conjunction with FIG. 13 may be referred to as “transition reduction.” As noted above, the transition thresholds for use in this technique can be dynamically selected as described in conjunction with FIG. 12.

It should be noted that while the threshold selection process described in conjunction with FIG. 12 and level selection (e.g., by “instantaneous” comparison of the signal to thresholds or on a window of data as in FIG. 13 below) are described as sequential, separate processes, they can be merged. That is, the processes of selecting thresholds and making level decisions needn’t necessarily be done sequentially but can be done together in parallel or in an interleaved manner while maintaining the overall benefit.

It should be appreciated that the particular threshold selection technique described in conjunction with FIG. 12 helps ensure a sufficient (Ideally minimum) duration in a state after transitions “up” into a higher state from a lower

state. In one embodiment, (level selection decisions are based either upon the specific current sample being processed, or with level selection decisions based upon a window of data as in the technique of FIG. 13. The window-based level selection technique of FIG. 13 (incorporating “transition reduction”) further ensures a sufficient (ideally minimum) duration in a state after transitions “down” into a lower state from a higher state.

Turning now to FIG. 13, a method 140 for selecting voltage levels for one or more power amplifiers of a power amplification system based upon a window of samples begins as shown in decision block 142 where a decision is made as to whether N_W samples can use a lower set of voltage levels than a previous sample and still meet output power requirements. If in decision block 142 a decision is made that a lower set of voltage levels can be used, then processing proceeds to processing block 144 where a new set of voltage levels that are lower than the previous sample (and preferably as low as possible) are selected to support all N_W samples and the selection process ends.

If in decision block 142 a decision is made that a lower set of voltage levels cannot be used, (i.e. if the N_W samples cannot use a lower set of voltage levels than the previous sample), then processing flows to decision block 146 where it is determined whether the set of voltage levels used for the previous sample is sufficient to support the current sample.

If in decision block 146 a decision is made that the set of voltage levels used for the previous sample is not sufficient to support the current sample, then a new set of voltage levels may be selected that are as low as possible to support the current sample as shown in processing block 148 and selection processing ends.

If in decision block 146 a decision is made that the set of voltage levels used for the previous sample is sufficient to support the current sample, then processing proceeds to processing block 150 and the same level selection is used for the current sample as was used for the previous sample. This process may be repeated for each new sample.

Referring now to FIG. 14, example waveforms illustrating the effect of the threshold selection process of FIG. 12 are illustrated in FIG. 14. Before time t_A , the system is in state 1. When the signal reaches time t_A , it exceeds L_1 , and the system switches to state 2. The “down” threshold (setting switching from state 2 to 1) is updated to be L_1' in the next sample. After a number of samples N_x (corresponding to a time duration $t_{m,x}$) the system has been operating in state 2 for N_x samples and the signal is above level L_1 , so the “down” threshold is updated to L_1 at time t_B . Consequently, the system switches from state 2 to state 1 at time t_C , when the signal falls below L_1 . The state again changes to state 2 at time t_D , when the signal again exceeds L_1 , and the “down” threshold is updated to L_1' . Since the level signal has fallen below L_1 by time t_E before time t_F when the system has been in its present state for N_x samples, the lower threshold is used for the down transition occurring at time t_G . In this case, the duration in state 2 is extended beyond that which would have occurred if only L_1 were used. This method thus balances achieving high efficiency (e.g., by using L_1 at time t_C) with the desire for minimum durations in each level (e.g., by using L_1' at time t_G).

There are also advantageous methods for pretraining or initializing the DPD system, either with live data or with test sequences. In a system with multiple states, it is advantageous to first linearize the system for the state providing operation across the broadest (and/or full) output range, and then successively include operating states covering narrower output ranges (preferably successively linearizing states

providing successively narrower output ranges). For example, consider a system switching among 3 discrete states S_1 through S_3 , where S_3 can achieve the full output power range, S_2 can achieve a reduced output power range, and S_1 can achieve a further reduced output power range. (This could occur in a system switching among three power supply levels, with S_3 using the largest, S_2 the second largest and S_1 the smallest supply voltage.)

This process is illustrated in FIG. 11.

To initialize the DPD system, one could initiate operation in state S_3 . After linearizing in state 3 sufficiently (at time t_A), the system could then switch to an operating mode using both S_3 and S_2 , and linearize for S_2 as well as S_3 (between time t_A and t_B). Finally, the system could incorporate use of all of S_1 - S_3 and achieve linearization of S_1 (after time t_C). By starting with the state that can reach the full operating range of the system, linearizing for that state, and successively moving to incorporate operation of reduced-operating-range states and linearizing operation for those states (preferably from the largest range state to the smallest), the system can be linearized more quickly and stably.

It should be noted that the techniques described here are applicable to systems with a plurality of power amplifiers, including where each power amplifier has a corresponding set of states or to systems where there is a set of states common to the amplifiers.

For example, FIG. 15 in which like elements of FIGS. 8 and 9 are provided having like reference designations, a system 160 comprising two power amplifiers (PAs) 162a, 162b each of which can have bias voltages (e.g. drain supply voltages) selected from a plurality of voltages $V1$ - $V4$; $V1'$ - $V4'$, along with a power combiner 164 to combine the individual PA outputs into a single output. It should be appreciated that voltages $V1$ - $V4$ and $V1'$ - $V4'$ may all be unique voltage levels or may be the same voltages (e.g. $V1=V1'$, $V2=V2'$, etc. . . .)

In such a system, each PA may have a state associated with it (e.g., which power supply is selected), and the whole system has an overall state (i.e., the power supply selections for the whole system), such that for a particular state of a given PA the system may exist in a particular set of the overall states. Transition thresholds and updates in such a system may be based on a “per-PA basis” (e.g., transitions thresholds set based on the duration over which a particular PA is in a certain state or during which the overall system is within a particular set of states, and transitions based on the signal applied to individual PAs with respect to their individual thresholds). Alternatively, the system may be considered as a whole and treated as having a unique set of states. In this case, transition decisions may be made comparing multiple signals to multiple thresholds, and decisions regarding thresholds made based on duration in a particular state or among particular sets of states.

Digital predistortion may be carried out in multiple manners consistent with the concepts, systems and techniques described herein. One may perform State-Based DPD on each PA independently with respect to its states. One may then optionally perform a system-level DPD process that runs on top of the individual PA linearization. Alternately, one may treat the system as a single large state-based power amplifier system and run a single SB-DPD algorithm. It may, in some applications be, particularly valuable to split the signals to the multiple PAs such that the contributions and performance of the individual PAs are observable from the received signal in order to provide robust, stable adjustment of the linearization over time. Moreover, in performing DPD, it can be important to provide a means to achieve

relative time alignment of the RF drive paths, as well as aligning RF paths to drain paths.

When a system corresponding to a power amplifier system such as that described in conjunction with FIGS. 7 and 8 for example is changed among different discrete states, undesired components may be injected into the PA output.

In the system of FIG. 9, for example, the power supply input switching among different levels may result in unwanted components being injected into the output at RF frequencies. The PA drain bias supply acts as a second input (in addition to the PA RF input), such that when the PA drain bias voltage switches sources (e.g., among different discrete levels), a disturbance “pulse” is introduced into the RF output of the PA system. This includes, for example, effective dynamic complex gain variations of the PA while the PA is transitioning. This can be partly addressed by control of the transitions among different supply levels (e.g., through transition filtering or other means.) Nevertheless, given that supply transitions can happen at a high rate, this can introduce significant energy into the output that does not represent the desired signal. The disturbances can appear as an increase in apparent “broadband noise” in the output spectrum of the power amplifier system. More generally, a temporary disturbance or pulse in the output may occur when the system is switching among discrete operating modes or among states.

A “pulse cancellation” technique can be used to address the problem of state changes introducing unwanted components in the output spectrum. In the pulse cancellation technique, the effects of a disturbance or other type of variation (e.g., at the drain input of the PA) are compensated (or “cancelled”) at the PA output by introducing a signal via the RF input of the PA. The output of the PA may vary from the desired value in both magnitude and phase during (and around) the transition, yielding an error in the RF output waveform. Considering time-aligned versions of the signals representing the commanded, transmitted, and sensed data, one may generate commands to the PA system $x[n]$ and $s[n]$ (setting the RF drive and state) and find $e[n]=y[n]-r[n]$, where $r[n]$ is the desired reference signal to output, $y[n]$ is the digitized baseband version of the generated output, and $e[n]$ is the error between the desired output and the generated output, where n may be referenced (for a given transition) to a time where deviations start to occur owing to the state transition. One may consider a limited effective pulse duration of $n=1 \dots N$ samples. It is likewise possible to operate with the continuous-time version of these signals, either at baseband or RF. For a given transition, it is possible to approximate the error pulse with a signal $e'[n]$ as:

$$e'[n]=G_0[n]+G_1[n]*r[n]$$

where $G_0[n]$ represents a data-independent dynamic error and $G_1[n]$ represents a dynamic gain error. In a simplification that is applicable in many cases, one may estimate that $G_0[n]$ is approximately zero and work only with $G_1[n]$ (or vice versa). More generally, one could consider higher-order polynomial fits between the data and the error (e.g., including square, cube, or higher terms in r), or could consider a “memory polynomial” formulation in which $e[n]$ is approximated as a sum of contributions deriving from present data and data at times earlier than n .

By collecting error information from numerous transitions, estimates of the values of the coefficients (e.g., $G_0[n]$ and $G_1[n]$) that occur for $n=1 \dots N$ of each transition can be made. (It is possible to use more or less coefficients as desired depending on the formulation. Also, in estimating pulses, it is possible to utilize or include data that is

“blanked” or “masked” for DPD, as described above.) Values for the coefficients characterizing the pulses can be obtained through least-squares calculations, for example. Based upon this estimation of the deviation, a “cancellation pulse” $p(t)$ can be synthesized, and injected into the data stream:

$$p[n]=-e'[n]=-(G_0[n]+G_1[n]*r[n])$$

Referring now to FIG. 16, a pulse cancellation system 170 includes a pulse estimation processor 172 which generates pulse parameters and provides the parameters to a pulse generation processor. The pulse estimation and pulse generation processors develop a pulse $p[n]$ and provides the pulse to a first input of a summing circuit 174. A second input of the summing circuit receives a data stream $r[n]$ and an output of the summing circuit is coupled to an input of a DPD system 176. It should be noted that the pulse cancellation system of FIG. 16 may be the same as or similar to the “pulse cancellation” portion of the exemplary linearization block illustrated in FIG. 8.

When a state transition occurs, an appropriate pulse is injected that provides “feedforward” nulling of the error associated with the pulse. It should be noted that the system of FIG. 16 shows the pulse $p[n]$ being developed and fed to the input of the DPD system. This is often preferable for highest performance, as one wants to replicate $p[n]$ in the output well (such that “linear” cancellation occurs). However, in some cases it may be desirable to synthesize and inject cancellation pulses into the data stream based on signals after the DPD (e.g., add $p[n]$ to the DPD output signal to form $x[n]$ to drive the digital to RF modulator). Also, in cases where only G_1 is of interest (that is, the system performance is determined largely as a time-varying gain during the transition), effective pulse cancellation can be performed by finding a dynamic gain

$$G_{1,d}[n]=1/(1+G_1[n])$$

and multiplying the data stream $r[n]$ (or $x[n]$) by $G_{1,d}[n]$ to find the “pulse corrected” signal. This multiplicative technique is equivalent to the additive G_1 component in $p[n]$ for small error coefficients G_1 and is applicable even if G_1 is not small. In all of these techniques, it is important to note that one must carefully address the time alignment of the compensation pulse with the transition and data signals, such that the pulse properly cancels the error.

Additional opportunities arise in systems having multiple power amplifiers, such as that in the exemplary embodiment of FIG. 15 where two amplifiers are shown (in general, however, a plurality of amplifiers may be used). Such systems include designs implementing “Asymmetric Multilevel Outphasing” or “Asymmetric Multilevel Backoff”. Often in such designs, the states of the individual PAs do not change simultaneously. Consequently, when one PA changes state (e.g., the supply voltage source for that PA changes), at least one other PA continues to operate in the same state (The state of the overall system is transitioning to a new state within a subset of the overall states). In such cases it is advantageous to inject a cancellation pulse to correct a disturbance owing to a supply (or state) transition of one PA through a second PA that is not undergoing a state transition at that time. This is because the second PA will operate in a more linear fashion during the transition of the first PA than the first PA itself will. So, for example, in the system of FIG. 15, a pulse compensating for the disturbance occurring when PA1 has a state transition can be injected via the data stream (leading to $x_2[n]$) for the second power amplifier PA2, and vice versa. In some systems, one may have a PA that does

not undergo discrete transitions, and may use this PA to inject cancellation pulses for other PAs that do.

Having described exemplary embodiments of the invention, it will now become apparent to one of ordinary skill in the art that other embodiments incorporating their concepts may also be used. For example, the inventive designs and methods for providing improved linearity in power amplifier systems in which component power amplifier(s) are switched among a set of operating states can be applied to RF amplifier systems in which drain bias voltages for one or more constituent power amplifiers in the RF amplifier system are dynamically selected from more than one possible source or level (e.g., switched between multiple discrete supply voltages.)

Accordingly, the concepts described herein should not be limited to disclosed embodiments but rather should be limited only by the spirit and scope of the appended claims. All publications and references cited herein are expressly incorporated herein by reference in their entirety.

What is claimed is:

1. An amplifier system having one or more inputs and one or more RF outputs, the system comprising:
 - one or more RF amplifiers each having one or more RF inputs, one or more RF outputs, and a power supply input;
 - a voltage control unit coupled to provide a power supply voltage to the power supply input of at least one of the one or more RF amplifiers wherein said voltage control unit dynamically selects the power supply voltage from among a discrete set of voltages based in part upon one or more signal characteristics of one or more signals to be transmitted; and
 - a controller configured to generate (i) control signals for the voltage control unit and (ii) one or more predistorted signals for at least one of the RF amplifiers, wherein the one or more predistorted signals are generated based, at least in part, on selected power supply voltages.
2. The system of claim 1 wherein said RF amplifier is provided as an RF power amplifier.
3. The system of claim 1 wherein the control signals and predistorted signals are selected to improve a linearity of the system.
4. The system of claim 1, further comprising means for training said system such that said predistorted signals are indexed at least in part based upon a selected level or input of the power supply.
5. The system of claim 1, wherein the one or more predistorted signals are generated based on data stored in a lookup table (LUT) indexed based, at least in part, upon a selected voltage of the power supply.
6. The system of claim 1, wherein a voltage applied to the power supply input of the at least one of said one or more RF amplifiers is selected from among a discrete set of levels.
7. The system of claim 1, wherein a voltage applied to the power supply input of the at least one of said one or more RF amplifiers is selected from among a discrete set of voltage levels for a first set of operating conditions, and from an input that provides continuous envelope tracking for other operating conditions not included in the first set.
8. The system of claim 1, wherein a time alignment between (i) a selection of the power supply voltage to each RF amplifier and (ii) providing the one or more predistorted signals to the one or more RF inputs of the one or more RF amplifiers is adjusted based upon the one or more RF outputs of the RF amplifier.

9. The system of claim 8, wherein the controller is configured to adjust the time alignment.

10. The system of claim 1 wherein the one or more signal characteristics of one or more signals to be transmitted comprises a window of digital data samples of at least one of the one or more signals to be amplified.

11. The system of claim 10, wherein the window of data samples is a moving window with respect to time.

12. The system of claim 1, further comprising:

a sensor coupled to at least one of the one or more RF outputs of the system, wherein the predistorted signal(s) are determined based, at least in part, on a sensed RF output.

13. The system of claim 12, wherein:

the controller is coupled to at least one digital-to-RF modulator to provide the predistorted signal(s) to at least one of the one or more RF inputs of the one or more RF amplifiers.

14. The system of claim 1, wherein disturbances in the RF output of the system owing to changes in a selection of the power supply input of at least one of said one or more RF amplifiers are compensated by an additive component in a baseband signal introduced via the one or more RF inputs of at least one of said one or more RF amplifiers.

15. The system of claim 1, wherein disturbances in the RF output of the system owing to changes in a selection of the power supply input of at least one of said one or more RF amplifiers are compensated by a multiplicative factor applied to digital data in a baseband signal for input to at least one of said one or more RF amplifiers.

16. A method of operating a multiple-input multiple output (MIMO) radio frequency (RF) amplifier system in an RF transmitter, the method comprising:

generating a discrete set of power supply voltages by a power supply of the system;

dynamically providing, by a voltage control unit of the system, generated power supply voltages to each of one or more RF amplifiers of the system, based, at least in part, upon a window of data samples of one or more input signals to be amplified by the RF amplifier system;

generating, by a controller of the system, one or more predistorted signals, wherein the one or more predistorted signals are based, at least in part, on a provided power supply voltage to each RF amplifier;

modulating, by a digital-to-RF modulator of the system, the one or more predistorted signals to be provided to an RF input of at least one of the RF amplifiers;

generating one or more amplified RF signals based, at least in part, on the one or more predistorted signals; and

transmitting the one or more RF signals.

17. The method of claim 16, comprising:

generating the window of data samples by selecting a window of N samples of at least one of the one or more signals to be amplified, where N is a positive integer; determining, by the voltage control unit, whether to select another set of power supply voltages by:

determining whether the N samples can use a lower set of power supply voltages than a currently selected set of power supply voltages to meet desired transmit signal characteristics and, if so, selecting a lowest set of power supply voltages that meets the desired transmit signal characteristics;

determining whether the N samples require a higher set of power supply voltages than a currently selected set of power supply voltages to meet desired transmit

signal characteristics and, if so, selecting a lowest set of power supply voltages that meets the desired transmit signal characteristics;

otherwise, maintaining the currently selected set of power supply voltages. 5

18. The method of claim 16, wherein the window of data samples comprises a plurality of digital data samples, the digital data samples taken of the signal to be amplified over a predetermined time interval.

19. A power amplifier system having one or more data 10 inputs and one or more RF outputs, comprising:

one or more power amplifiers that are switched among a discrete set of operating states based at least in part upon data provided to the one or more data inputs of the power amplifier system; and 15

a state-based digital pre-distortion (SB-DPD) system, 20 coupled to at least one of the one or more power amplifiers, said SB-DPD system for improving linearity of the power amplifier system by predistortion of signals provided to one or more of said one or more power amplifiers, said predistortion depending at least in part upon an operating state of said one or more power amplifiers.

* * * * *